



ADAM'S

Est 1887

COURTOWN HOUSE
KILCOCK, CO. KILDARE, IRELAND.
ON THE PREMISES

WEDNESDAY 22ND APRIL 2015 AT 11.00AM



The Kildare foxhounds at Courtown circa 1925



Brian Coyle FSCSI FRICS
Chairman



James O'Halloran BA FSCSI
FRICS
Managing Director
j.ohalloran@adams.ie



Stuart Cole MSCSI
MRICS
Director
s.cole@adams.ie



Eamon O'Connor BA
Director
e.connor@adams.ie



David Britton BBS ACA
Director
d.britton@adams.ie



Nick Nicholson
Consultant
n.nicholson@adams.ie



Kieran O'Boyle BA Hdip ASCSI
Associate Director
k.oboyle@adams.ie



Abigail Bernon BA
Fine Art Department
abigail@adams.ie



Ronan Flanagan BA
FINE ART DEPARTMENT
ronan@adams.ie



Karen Regan BA
Jewellery Department
Karen.regan@adams.ie

ADAM'S^{EST 1887}

26 St. Stephen's Green, Dublin 2.
Tel +353 1 6760261 Fax +353 1 6624725
info@adams.ie www.adams.ie

ADAM'S^{EST 1887}
at Clondeboye

The AVA Gallery
Clondeboye Estate
Bangor, Co. Down
BT19 IRN
(T) +44 (0)28 91852263
email: info@adams.ie

THE CONTENTS OF COURTOWN HOUSE & STUD

AUCTION

WEDNESDAY 22ND APRIL 2015 AT 11.00AM

VENUE

COURTOWN HOUSE & STUD, CO KILDARE, IRELAND

SALE CODE

THIS SALE MAY BE REFERRED TO AS 7042 IN ALL CORRESPONDENCE

CATALOGUE

€20.00 (PLUS €3 POSTAGE & PACKAGING)
or free to download at www.adams.ie

VIEWING AT COURTOWN HOUSE, KILCOCK, CO KILDARE

SATURDAY	18TH APRIL	10.00AM - 5.00PM
SUNDAY	19TH APRIL	11.00AM - 5.00PM
MONDAY	20TH APRIL	10.00AM - 5.00PM
TUESDAY	21ST APRIL	10.00AM - 5.00PM

COLLECTIONS:

ALL LOTS MUST BE PAID FOR AND COLLECTED BEFORE 12 NOON ON FRIDAY 24TH APRIL 2015
AT THE PURCHASER'S RISK AND EXPENSE, AFTER THAT ITEMS WILL BE REMOVED TO COMMERCIAL STORAGE.

ENQUIRIES (ON VIEW AND SALE DAYS ONLY)

TELEPHONE 353-1-6767188
FAX: 353-1-6624725

info@adams.ie
www.adams.ie

Bid online at our auctions through
the-saleroom.com



RICS

the mark of
property
professionalism
worldwide

IMPORTANT INFORMATION FOR PURCHASERS

1. Estimates and Reserves

These are shown below each lot in this sale. All amounts shown are in Euro. The figures shown are provided merely as a guide to prospective purchasers. They are approximate prices which are expected, are not definitive and are subject to revision. Reserves, if any, will not be any higher than the lower estimate.

2. Paddle Bidding

All intending purchasers must register for a paddle number before the auction. Please allow time for registration. Potential purchasers are recommended to register on viewing days.

3. Payment, Delivery and Purchasers Premium

Thursday 23rd April 2015 from 10.00am - 5.00pm and Friday 24th April from 10.00am - 12 Noon. **All purchases must be paid for and removed from the premises not later than 12 Noon on Friday 24th April, 2015 at the purchasers risk and expense. After this time all uncollected lots will be removed to commercial storage and additional charges will apply. Auctioneers commission on purchases is charged at the rate of 20% (exclusive of VAT).** Terms: Strictly cash, bankers draft or cheque vouched to the satisfaction of the auctioneers, prior to sale. Purchasers wishing to pay by credit card (Visa & Mastercard) may do so, however, it should be noted that such payments will be subject to an administrative fee of 1.5% on the invoice total. American Express is subject to a charge of 3.65% on the invoice total. Please contact our accounts department prior to sale with your payment queries.

4. VAT Regulations

All lots are sold within the auctioneers VAT margin scheme. Revenue Regulations require that the buyers premium must be invoiced at a rate which is inclusive of VAT. This is not recoverable by any VAT registered buyer.

5. Condition Reports

Please note that imperfections are not stated. Please ensure that condition report requests are received before 4pm on Monday 8th October as we cannot guarantee that they will be dealt with after this time.

6. Absentee Bids

We are happy to execute absentee or written bids for bidders who are unable to attend and can arrange for bidding to be conducted by telephone. Bid forms are available from our web site www.adams.ie or can be requested by telephone, please see contact information to the front of catalogue. **During viewing days only please fax your bids to 01-6624725. Prior to viewing days at Courtown House & Stud please fax your bids to 01-6624725. All arrangements for absentee bidding must be made before 3.30pm on the day prior to sale.** Cancellation of bids must be confirmed before this time and cannot be guaranteed after the auction has commenced.

Bidding by telephone may be booked on lots with a minimum estimate of €1,000. Early booking is advisable as availability of lines cannot be guaranteed.

7. All lots are being sold under the Conditions of Sale as printed in this catalogue and on display in the salerooms.

CREATE A 'MY ADAM'S' ACCOUNT

You can now create your own account with us by signing up and registering your particulars online at www.adams.ie

The process involves uploading identification by way of passport or driving licence and supplying valid credit card information. This is a once off request for security purposes, and once the account is activated you will not be asked for this information again. You can leave absentee bids online, and add, edit or amend bids accordingly as well as other useful functions including paying your invoice.









The Barony of Ikeathy consisting of the fertile lands of North Kildare is bound to attract the attention of ambitious people desirous of establishing themselves. The indigenous owners lost out to families of Norman descent, the Wogans, Husseys and Aylmers.

The latter family, recorded in Co. Kildare since the early 14th Century conformed to the established church and settled at Courtown in the 18th Century. Colonel Michael Aylmer's house here was burnt in the rebellion of 1798. Ironically the United Irish officer responsible for the sack of Kilcock was Colonel Aylmer's kinsman, William Aylmer.

Compensation being insufficient, the house was not rebuilt until 1815 by Colonel Aylmer's son John, and if elegant it was perforce kept plain and simple. Such elegance was to be distorted by Major John Algernon Aylmer in the 1890's when he built a new entrance front, installing a sort of baronial staircase and giving the overall composition a lop-sided and awkward appearance.

The Aylmers sold Courtown after the 2nd World War to Colonel Drummond of the great Scottish clan headed by the Earl of Perth. Drummond belongs to that little studied but seemingly numerous influx of well-to-do people, fed up with the restrictions of post-war England who having 'done their bit' in the war found in Ireland a surviving agreeable life-style of the hunting, racing, shooting traditions of the Irish countryside.

Colonel Drummond furnished Courtown in proper county house style, judging by the 1963 catalogue of his sale when he sold on to the O'Brien family, baronets, who had received Queen Victoria on her first visit to Dublin in 1849. From the O'Briens in 1981 the O'Mahony family also took on some of the furnishings installed originally by Colonel Drummond. Since then, the O'Mahony family have restored and furnished the house and tended the estate. The restoration of the wonderful Victorian green house, certainly by Richard Turner of Dublin, is a triumph.

The view south from the tall drawing room windows, across the rich paddocks to William Hague's spire at Maynooth and on to the Wicklow hills is a picture. No wonder anyone who ever lived here was horse and hunting mad.

Caught up in this sporting enthusiasm in the 1950's was the renowned film director John Huston and his family who rented Courtown for a number of years to hunt with the Kildares and other packs of hounds. A galaxy of friends such as Robert Cappa, the photographer, came to stay for the hunting.

Angelica Huston remembers Courtown with affection. Taken onto the frontstep on a frosty night in her mother's arms, to watch a shower of meteorites she never forgot her parents saying, "if you make a wish, it will come true."





- 1 **A LATE 19TH CENTURY GILT METAL FRENCH MANTLE CLOCK,**
with white cylindrical dial flanked by a seated female figure with an anchor, on embellished white onyx base, with giltwood stand. 29cm high x 40cm wide

€300 - 500

- 2 **A BRONZED ART-NOUVEAU STYLE FIGURAL LAMP**
with three naturalistic branches. 91cm high

€150 - 250



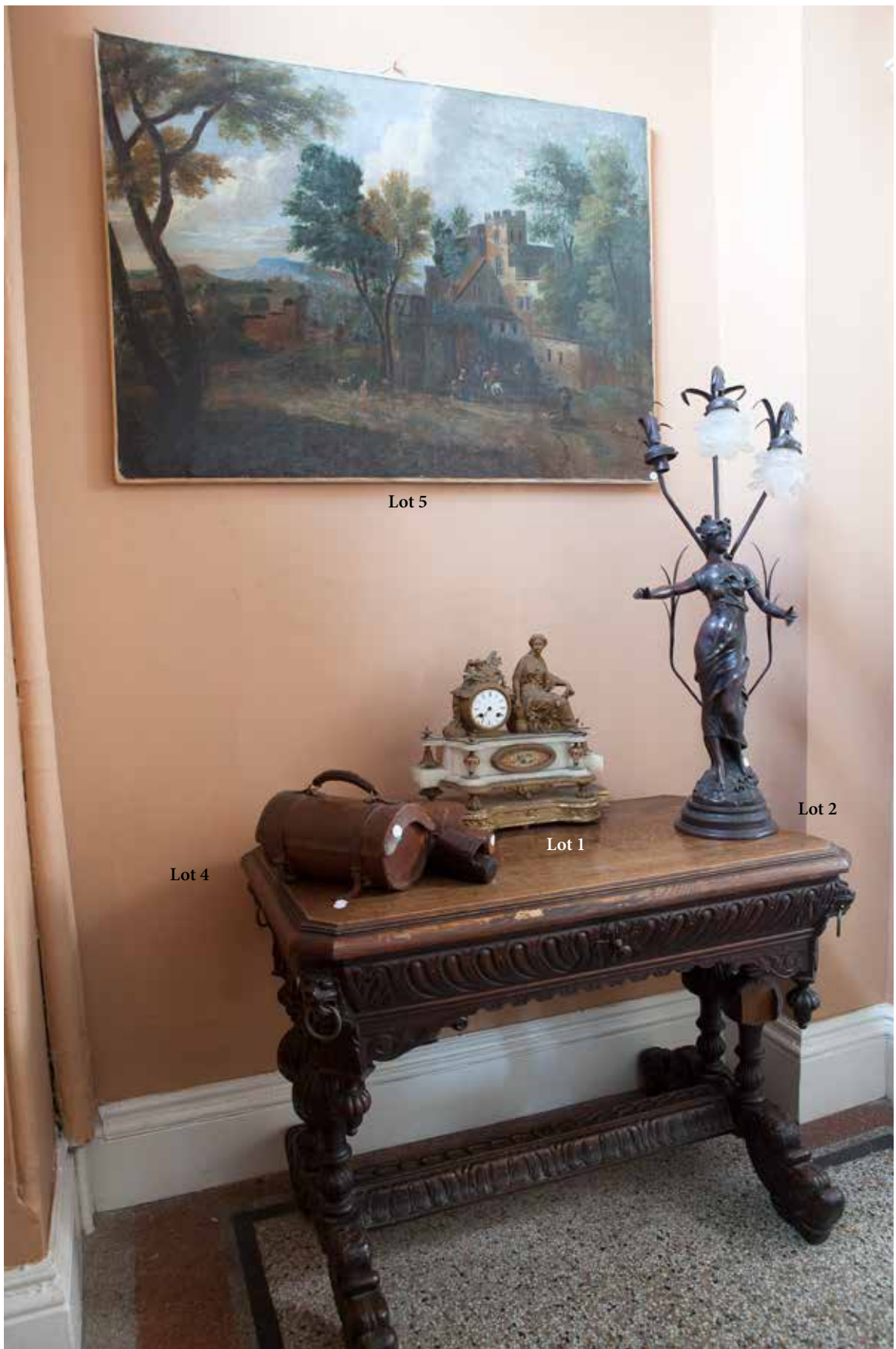
- 3 **A COLLECTION:**
A pair of Treen bowls with engraved horn insets; a glass hunting flask with silver mounts with inscription, London 1880; and another with plated mounts, all in leather cases (3)

€250 - 400

- 4 **A CARVED OAK SIDE TABLE,**
19th Century, in the Mannerist style, with long frieze drawer, on twin lobed end supports, with sea-monster feet. 106cm wide, 60cm deep, 76cm high

€500 - 700





Lot 5

Lot 2

Lot 1

Lot 4



- 5 **STYLE OF WOUVERMANS**
A fashionable party halting at a village in a landscape
Oil on canvas, 85 x 116cm (unframed)

€800 - 1,200

- 6 **ENGLISH SCHOOL,**
Late 19th Century
A breezy rocky coastal study with seabird
Oil on canvas, 59 x 88cm

€400 - 600



- 7 **A CARVED OAK AND ELM MONK'S BENCH**
in the Mannerist style, 19th Century, the back with panels
of tavern scenes and with finials as busts of 17th Century
figures. 120cm wide x 107cm high x 46cm deep

€600 - 1000

- 8 **A METAL AND (NOW) GILT COPPERED
SIGNAL CANNON,**
on timber scutcheon, the barrel 56cm long

€300 - 500



- 9 **A GILT METAL HEXAGONAL HALL LANTERN,**
the arched panel below a scrolled corona.

€800 - 1000



Lot 7



Lot 8



Lot 10

- 10 AN ORIENTAL PORCELAIN CYLINDRICAL CONTAINER, painted in blue and white with foliage. 61cm high
€100 - 200

- 11 A COLLECTION OF SIX WALKING CANES, one with silver knob marked for London 1933
€150 - 200

- 12 A PAIR OF OVAL REPRODUCTIONS OF COTTAGERS, in oval gilt-gesso frames. Each 33 x 25cm
€50 - 100



Lot 11

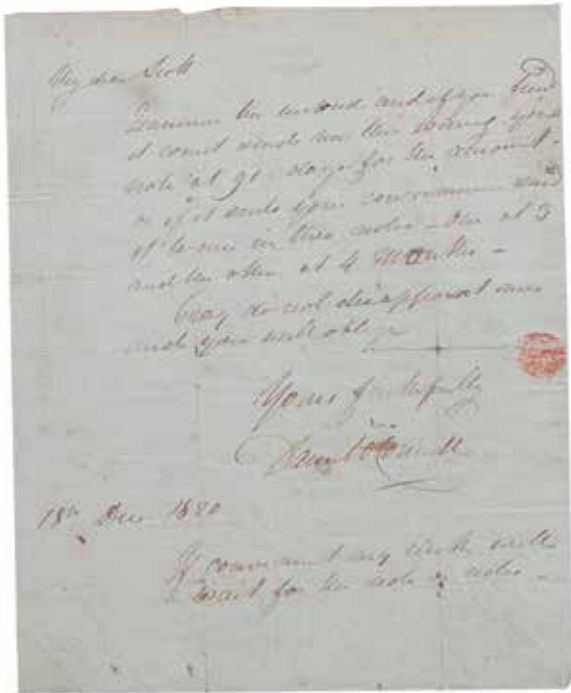


Lot 12

- 13 AN ORMOLU CASED CARTEL BAROMETER,
in Louis XV style, the enamel dial calibrated with French titles,
the case surmounted by an urn, flanked by rams heads and
framed by the Nemean lion mask and pelt. 84cm high

€2,000 - 3,000





4 THE FITTED CURTAINS IN THE HALL

€100 - 200

5 DANIEL O'CONNELL (1775-1847)

Holograph letter, signed, addressed to Richard Scott Esq. Attorney at Law, Earl Street, dated 18th Dec. 1820, about legal costs, framed

€300 - 500

6 TAXIDERMY: TWO GAZELLE HEADS

€200 - 300



A SET OF FIVE GILT-BRASS FIVE-LIGHT
WALL SCONCES,
in Louis XV style, with flambeaux cresting. Each 62cm high

€1,500 - 2,500





Lot 18

Lot 22

Lot 23

Lot 27

Lot 16



Lot 20



Lot



Lot 54





19 ENGLISH SCHOOL C.1900
Cattle by a River
Oil on canvas c.30 x 50 cm

€200 - 300



20 ENGLISH SCHOOL, C.1850
The Absent Father, a group of children, an obelisk in the distance
Oil on canvas, 50 x 59cm

€600 - 1000



21 M. ALEXANDER (MODERN SCHOOL)
A 19th century Dutch Beach Scene
Oil on canvas, 29 x 39cm
Signed

€200 - 300

22 A FLAMBOYANT CARVED GILT WOOD FLORENTINE STYLE TAPERING MIRROR, with pierced scroll frame, armorial cartouche cresting and lion mask apron. 165cm high, 95cm wide

€1,500 - 2,000



Lot 25

Lot 30

Lot 24



Lot 23

- 23 A GOOD PAIR OF DOULTON LAMBETH OVOID SHAPED VASES, the banded bodies, gilt on encrusted blue ground, the necks and bases with ochre glazing and with decorators marks and impressed DOULTON, LAMBETH, England, F.8569. Each 38cm high

€250 - 400

- 24 A PAIR OF LARGE IRON BOUND COOPERED FUEL CONTAINERS, formed from a barrel

€600 - 1,000

- 25 A FOUR-FOLD GILT BRASS AND WIRE MESH SPARK GUARD, and a black painted iron work larger example (2)

€300 - 500

- 26 A PAIR OF TALL BRASS ANDIRONS and two brass fire irons (4)

€100 - 200

- 27 AN ADJUSTABLE BRASS FENDER, in Mannerist style, with knopped urns, supporting shields of heraldic lions

€250 - 400



Lot24, 25, 27

28 A BRONZED METAL TORCHERE,
in the form of a classical maiden holding aloft a pair of
flambeaux lamps, on a hexagonal oak stand. 150cm high,
225cm overall

€2,000 -3,000





Lot 30



Lot 31



Lot 32



Lot 34

- 30 A BLACK FORGED IRON FIRE TIDY and another in brass.
€50 - 100
- 31 A CIRCULAR GRADUATED MAHOGANY THREE-TIER DUMB WAITER, in Georgian style, on tripod support. 106cm high, the trays 60cm diameter and smaller
€300 - 400
- 32 AN ARAB BRASS MOUNTED FLINT-LOCK PISTOL; and a pair of gilt-brass open work terminals set with facet cut glass on stands (3)
€200 - 300
- 33 A PAIR OF CARVED BLACK STAINED OAK TALL BACK HALL CHAIRS, with solid panel seats, in the Mannerist style
€100 - 200
- 34 A GERMAN PAINTED PLASTER GROUP OF TWO CHILDREN. 38cm high
€20 - 40



35 TAXIDERMY: AN ANTIQUE MOUNTED WATER BUFFALO HEAD ON EBONISED BACKBOARD

€1,000 - 1,500



36 TAXIDERMY: AN ANTIQUE MOUNTED WATER BUFFALO HEAD ON TIMBER BACKBOARD, with plaque "LONGEWETTE RIVER December 21st 1913"

€1,000 - 1,500



Lot 37

- 37 A MAHOGANY TILT-TOP SUPPER TABLE, in Georgian style, the shaped top flat-carved with roundels with foliate centre, on carved tripod base (likely to have been from a period table). 77cm diameter

€800 - 1,000

- 38 A LOUIS QUINZE STYLE GILTWOOD FRAMED SALON SUITE, comprising a canapé and a pair of matching bergères, upholstered in grey striped silk with loose cushions

€2,000 - 3,000



Lot 38

- 39 AN ITALIAN WHITE MARBLE BUST, Of a peasant girl, 19th century, with folded head-dress and regional costume. 65cm high on pedestal base

€2,000 - 3,000



Lot 41

- 40 AN EMPIRE STYLE WHITE MARBLE PEDESTAL, of square outline, with gilt metal mounts and raised on platform base. 112cm high, 34sq.

€800 - 1,200

- 41 AN ITALIAN WHITE MARBLE BUST Of a peasant girl, with folded head-dress, a rose in her bodice, marble socle. 56cm high

€1,500 - 2,000



Lot 39

Lot 40



Lot 48



Lot 49



Lot 49

- 47 **EDWARDIAN SCHOOL**
 Portrait of a fashionable lady,
 half length, with white silk blouse, gold chain and fur
 wrap
 Oil on canvas, 84 x 56cm
 €800 - 1,200

- 48 **STYLE OF ROMNEY**
 Portrait of a young woman, half length, with elaborate
 bonnet, in a landscape
 Oil on canvas, 74 x 60cm
 €800 - 1,200

- 49 **A MOTTLED GREEN MARBLE PEDESTAL,**
 in Empire style, the tapering shaft with brass mounts, 'à la
Égyptienne', on a breakfront base. 102cm high, 38 x 28cm
 €800 - 1,200



50

A 19TH CENTURY CONTINENTAL CARVED GILT-WOOD SOFA IN LOUIS XVI STYLE, the back with laurel cresting, with arrow filled quiver sides, down-swept acanthus embellished arms, the indented front on spiral carved feet upholstered in pin striped silk, with cushions. 177cm wide x 84cm deep

€3,000 - 5,000



- 51 ENGLISH SCHOOL, 19TH CENTURY
 (AFTER GEORGE MORLAND)
 The Young and Pretty Fish Seller
 Three-quarter length, on the sea shore
 Oil on canvas, bears initials G.M. 59 x 44cm

€400 - 600



- 52 IRISH SCHOOL, 19TH CENTURY
 A colleen in a cottage interior by a spinning wheel
 Oil on canvas, 60 x 49cm

€1,000 - 1,500



- 53 M. K. KIERNAN (20TH CENTURY,
 STYLE OF HEYWOOD HARDY)
 A Romantic 18th century couple with horses and a groom
 by a gateway to a park
 Oil on canvas, 51 x 73cm
 Signed

€200 - 400



54

A HANDSOME PALLADIAN REVIVAL CARVED GILT-WOOD SIDE TABLE, 19th century, with moulded striated marble rectangular top, above a Greek key frieze set with drawers and supported on four panelled corbelled legs with masks of woodland deities, acanthus scrolls on blocked feet, and with conforming pilasters to the back. 194cm wide, 68cm deep, 84cm high

€5,000 - 7,000



- 55 A CONTINENTAL SIXTEEN LIGHT BRASS
FRAMED CHANDELIER,
hung overall with lustres and drops

€800 - 1,000
- 56 A MODERN CHINESE WOOL RUG,
with traditional symbols on red ground. 240 x 155cm

€500 - 800
- 57 AN EBONISED STAND,
19TH CENTURY, on triform support with rounded
knobbed platform stretcher, gilt-metal mounts. 35cm
diameter, 88cm high

€60 - 100



58 A SUITE OF THREE SILVER PLATED FIVE LIGHT CANDELABRA,

of Roman triumphal form, the acanthus scrolled branches on fluted tapering columns with scrolling foliate collars, the acanthus embellished pediment bases on laurel scrolled lion paw feet. 68cm high, the pair 62cm high

€3,000 - 5,000



59 TWO SIMILAR STEEL BASKET HILTED SWORDS

€1,000 - 1,500

60 A NAVAL BRASS HILTED SWORD and a Japanese Sword

€200 - 300

61 A COLLECTION OF FOUR COPPER HUNTING HORNS,
one marked *Belvoir*, another *Hy Keat*, *Sutton Scotney*.
40cm and smaller

€200 - 300

62 A BRASS HILTED NAVAL SWORD;
and a collection of five bayonets (6)

€250 - 450

63 A PAIR OF LATE JAPANESE IMARI PORCELAIN SHALLOW DISHES.
Each 26cm diameter

€20 - 40



64

GERMAN SCHOOL, 18TH CENTURY

Portrait of an Officer, half length, with powdered hair, wearing an embroidered crimson coat over a polished steel cuirass
Oil on canvas, 82 x 67cm

€2,000 - 3,000



Lot 65

- 65 A VICTORIAN GILT-WOOD PIER MIRROR, the flat pedimented top with cartouche cresting, the arched plate with moulded borders, on an associated white serpentine marble top console (lacking legs), on toupie feet. 78cm wide, 248cm high

€600 - 1,000

- 66 AN EBONISED TRIFORM STAND, c.1900, in French style, gilt-metal mounts, now fitted with a French painted porcelain jardinière vase (damaged). The stand 106cm high, the vase 22cm

€300 - 500

- 67 ATTRIBUTED TO WILLIAM SIMSON (1800-1847)
A Dutch Fishing Fleet, inshore with figures
Oil on mahogany panel, 27 x 40cm

€800 - 1,200



Lot 67

- 68 A VICTORIAN CARVED GILT-WOOD ARMORIAL SIDE TABLE, with striated rectangular marble top, the scroll frieze centred by a mask of Venus, the sides by satyr masks on bold incurved legs, headed by female anamorphic griffins, the cross-over stretcher centred by an heraldic plaque and motto with double-headed eagle crest and supported by lions rampant. 71cm deep, 157cm wide, 103cm high

€5,000 - 7,000



Lot 68



69 R. HIGGINS (MODERN SCHOOL)
River Landscape with Waterfall
Acrylic on board, 18.5 x 19cm
Signed

€60 - 100



70 MODERN IRISH SCHOOL
Sunset over a Western Bog; and Storm on the Coast
Oils on artists boards, 24 x 34cm and 28 x 39cm (2)

€200 - 300



Lot 72





72 **AFTER GIAMBOLOGNA**
A gilt bronze figure of Mercury, on black marble base,
67cm high

€600 - 1,000

73 **A FRENCH WHITE MARBLE AND GILT METAL
PEDESTAL,**
the inverted fluted column on stepped base (originally
with brass revolving mechanism for a statue). 107cm high

€800 - 1,000



74 **ENGLISH SCHOOL,**
19th Century
Rocks on the south coast of England
Watercolour, 35 x 50cm
Inscribed and dated August 13 1851

€150 - 250



75 A PAIR OF LARGE BRONZED METAL
EQUESTRIAN GROUPS,
of the fallen Amazon After Poitevir
On simulated marble bases, 62cm high, 52cm wide

€3,000 - 5,000





76 A LARGE MODERN CHINESE CARPET,
with floral decoration, on turquoise ground. 300 x 420cm

€600 - 1,000



77 A PAIR OF ORMOLU WALL SCONCES,
in the Louis XV style, the shield back plates framed by
winged figures, the scroll branches with rams heads
supporting openwork lanterns with flambeaux finials.
57cm high

€1,000 - 1,500

78

AFTER GIAMBOLOGNA,

19th Century

The famous figures of Mercury and Aries
Bronze, each on amber marble socles with bronze
reliefs, 82cm high each (2)

€2,000 - 4,000





- 79 **T.H. WILLOUGHBY-BEDDES C.1896**
 Breakers on a Rocky coast.
 Oil on canvas, 62 x 124cm
 Signed and dated 1896

€800 - 1,200



- 80 **STYLE OF MARK FISHER RA (1841-1923)**
 Wooded Landscape with cattle and figures by a hamlet
 Oil on canvas, 51 x 75cm
 Signed

€500 - 800

- 81 **ITALIAN SCHOOL 19TH CENTURY**
 A scene from an Italian opera, depicting a young lady
 passing a note to a lover, abetted by her maid.
 Oil on canvas, 128 x 160cm
 Signed indistinctly and dated 1844

€4,000 - 6,000

Lot 81

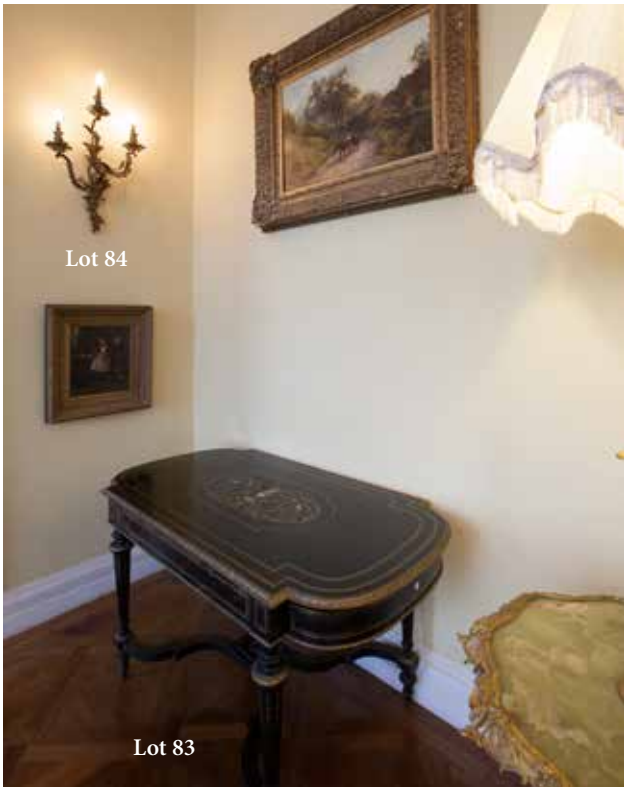




Lot 82

- 82 A GILT METAL STANDARD LAMP TABLE, in Rococo revival style, the telescopic shaft rising from a twist column, the shaped table top of onyx, on scrolled open tri-form base. The table 59cm diameter, 80cm high

€500 - 800

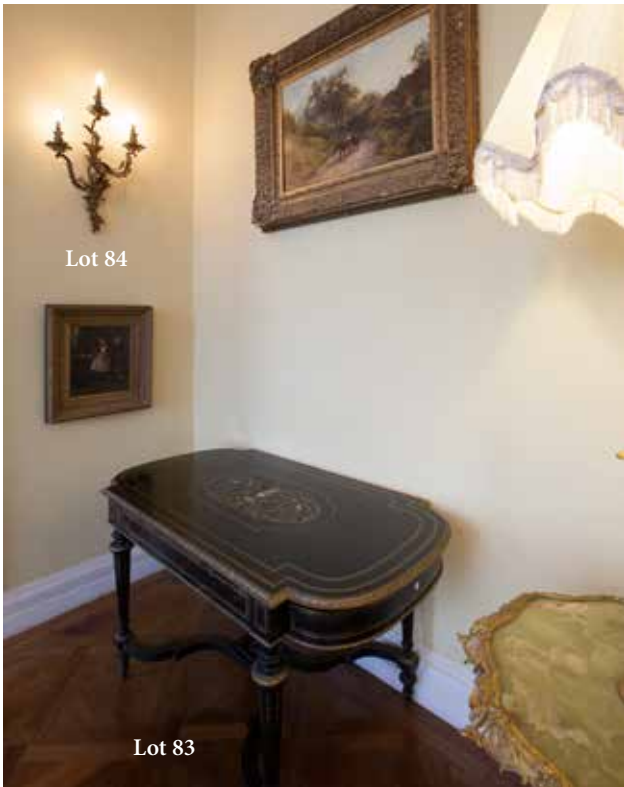


Lot 84

Lot 83

- 83 AN EBONISED, BRASS AND MOTHER O' PEARL INLAID BREAKFRONT CENTRE TABLE, in Louis XIV style, with bowed ends, frieze drawer, on fluted toupie style legs, joined by shaped cross-over stretcher with central urn mounted platform, the top with berainese inlay, gilt palmette rim and mounts. 136 x 76cm, 75cm high

€400 - 800



- 84 A PAIR OF ORMOLU THREE-BRANCH WALL SCONCES, in Louis XV style. Each 63cm high (converted to electricity)

€1,000 - 1,500



Lot 85

- 85 A WHITE MARBLE AND GILT METAL CLOCK GARNITURE, French late 19th century, the white enamel dial within a mannerist frame set into a pedestal, surmounted by a bronze group of a standing woman with an urn, on canted plinth base, and a pair of tazzae on conforming marble pedestals. The clock 47cm high, the tazzae 25cm

€800 - 1,200

- 86 A ROCOCO REVIVAL CARVED GILTWOOD MIRROR, the oblong shaped frame with trellis filled scroll cresting, the plate with foliate swags, the frame within platforms for porcelain, two supported by dragons. 125cm high, 140cm wide

€1,500 - 2,000



Lot 86

Lot 85 (part)



Lot 87

- 87 AN EBONY AND BRASS BREAKFRONT CENTRE TABLE,
in Louis XV revival style, with bowed ends, long frieze drawer, on tall toupie shaped fluted legs, gilt metal gadrooned rim and mounts, the top with berainesque partie engraved brass inlay

€800 - 1,200

- 88 A BRASS FIRE TIDY AND A COPPER COAL SCUTTLE,
with brass handle

€50 - 100

- 89 A FOUR FOLD BRASS AND WIRE MESH SPARK GUARD,
and a larger black painted example (2)

€50 - 100



Lot 90

- 90 A 19TH CENTURY MAHOGANY FOUR DECANTER BOX,
with sunk brass handles, the lock inscribed "*Royal Letters Patent Lever Safety Lock*", now with a single later square cut glass spirit decanter and stopper. 23cm high x 22cm wide

€300 - 400

- 91 A VERY FINE FRENCH 19TH CENTURY ORMOLU MOUNTED AND SILICATE STONE BALUSTER SHAPED URN,
with acanthus scrolled handles, on circular ribbon beaded foot and square pedestal panelled base, fitted with a later six light candleabra top and converted to electricity. The vase 50.5cm high x 69cm

€3,000 - 5,000



Lot 91



Lot 92



Lot 93

- 92 A GEORGIAN REVIVAL CARVED MAHOGANY PEDESTAL, with gadroons rim, on four canted tapering panelled legs, headed by lion masks, platform stretcher on hairy paw feet. 42cm square x 110cm high

€1,000 - 1,500

- 93 A PAIR OF RUBY GLASS AND WHITE ENAMEL OVERLAID TRUMPET SHAPED VASES, 19th century, painted with flowers, with lustres. 31cm high each

€200 - 300

- 94 TAXIDERMY: AN ANTIQUE BEAR'S HEAD AND AN ANTIQUE CHEETAH'S HEAD ON MAHOGANY BACKBOARD.

€200 - 300

- 95 A GOOD IRISH 19TH CENTURY CARVED MAHOGANY SIDE TABLE, in the manner of Michael Butler, moulded rectangular top, the deep frieze centred by a moustached satyr mask flanked by scrolling foliage and rosette centred swags, conforming sides, on mask headed cabriole legs with claw and ball feet. 160cm wide x 66cm deep x 76cm high

€5,000 - 7,000



Lot 94

Lot 81



Lot 95





Lot 98



Lot 96

- 96 A BLACK PAINTED GAMES TABLE, with inlaid marble top and a modern chess set in carved stone. 70cm high

€200 - 300

- 97 A MATCHED PAIR OF CHESTERFIELD SOFAS, on turned wood feet, in striped upholstery, with cushions etc. Each 184cm x 98cm deep

€800 - 1,200

- 98 A MODERN CHINESE WOOL CARPET, overall floral design on a green ground. 305cm wide x 430cm long

€600 - 800

- 99 AN IRISH GEORGE IV ROSEWOOD AND PARCEL GILT CONSOLE TABLE, ATTRIBUTED TO DEL VECCHIO, DUBLIN. on incurved scroll legs and concave platform stretcher, gilt metal mounts and a pier mirror, associated but close to date, with flat pediment and outset corners, the plate with ebony ribbed surround within a frame of anthemion wrapped engaged columns, with beaded panels, the table 128cm wide x 57cm deep x 91cm high

€6,000 - 10,000



Lot 97



Lot 99



100 A SIX LIGHT CUT GLASS CHANDELIER,
formed as a waterfall of drops and lusters, with scroll branches and icicle drops

€1000 - 1,500



101 AN IMPORTANT PAIR OF IRISH REGENCY NEO-CLASSICAL GILT-WOOD TORCHERS, ATTRIBUTED TO DEL VECCHIO, DUBLIN, in the style of Robert Adam, in the form of triform braziers of antiquity with acanthus neck eagle heads, gathered, and raised on talon feet, above a central leaf wrapped stem, on concave triangular bases set with rosettes, on later bun feet. Each 144cm high, 56cm wide

€20,000 - 30,000

DEL VECCHIO

This pair of elegant Roman inspired torchers retain the 18th Century fascination for neo-classicism where the anthenienne altars of the vestals and nature divinities were adapted for domestic use by Robert Adam and others. Artists such as Angelika Kaufmann delighted in their satisfying geometric decorative possibilities.

The attribution to Del Vecchio is based on the existence of another pair, currently on the US art market, which are patently the others, of a set of four, to the present lot, and given to Del Vecchio.

The lighter, more Continental feel to these examples does point to a non-English source. The Del Vecchio family, carvers and gilders, settled in Dublin from Italy in the early 19th Century and produced an extraordinary quantity of gilded mirrors, console tables and such like. In the 1820's James Del Vecchio, junior, issued his trade card from 68 Dame Street (late of 17 Lower Abbey Street) advertising a range of carved, gilded and gessoed items.





- 102 **AN IMPRESSIVE CARVED GILT-WOOD SIDE TABLE,**
in the manner of Mathias Locke, with patterned green marble
rectangular top, the deep frieze centred by the bearded mask of
Hercules, swagged by the head and pelt of the Nemean lion, the pan-
elled scaled canted in-curved legs formed as winged Nikes, the ribbed
acanthus embellished cross-over stretchers centred by eagle cresting.
217cm wide, 90cm deep, 87cm high

Provenance: Carton House, Co. Kildare 1977 auction.

€20,000 - 30,000



The table in situ at Carton circa 1977





Lot 103 & 104

- 103 A LEAD BUST OF WILLIAM SHAKESPEARE,
raised on a circular socle, 54cm high

€300 - 500

- 104 A PINK MARBLE AND GILT METAL STAND,
on triple pillar supports, on moulded base with foliate
outset feet. 43cm diameter x 98cm high

€350 - 500

- 105 A VICTORIAN MAHOGANY READING TABLE,
with revolving trefoil book gallery on tripod scrolled sup-
port on castors. 41cm diameter, 70cm high

€300 - 500

- 106 AN EDWARDIAN ROSEWOOD AND PALE
MAHOGANY TABLE CABINET,
the square glazed cabinet top with a long drawer inlaid
with a happy psuedo-classical frieze, the outset base with
shaped frieze on gilded fluted turned legs. 136cm high x
73cm wide x 38cm deep

€1,000 - 2,000



Lot 105

- 107 A DUTCH ETCHED GLASS SPIRIT FLASK AND
STOPPER

with pull-off pierced silver base, and a set of six dram
glasses with similar silver bases, the silver components
.925 standard with English import marks, the flask. 15cm
high;
together with a set of 7 ruby stemmed wine glasses and
another

€200 - 300



Lot 106



Lot 108

- 108 MODERN SCHOOL
A 19th Century Dutch Seascape of shipping in-shore
Oil on canvas, 40 x 50cm
Signed

€200 - 300



Lot 109

- 109 A CAST BRASS TELESCOPIC EXTENDING
STANDARD LAMP
with integrated circular onyx table and raised on leaf
scroll tripod supports and paw feet, electrified. 167cm
high

€500 - 700

- 110 A GILDED TIMBER FRAMED RECTANGULAR
COFFEE TABLE
with inset grey veined marble top above pierced frieze and
raised on bell capped fluted tapering legs. 104 x 51.5cm

€250 - 300

- 111 **AFTER AUGUSTE MOREAU**
 A figure of a boy playing a lute, seated on a stool
 Bronze, 68cm tall
 €2,000 - 4,000



- 112 **AN IRISH WILLIAM IV MAHOGANY
 RECTANGULAR TEA POY,**
 by Williams & Gibton, the lift top with bead and reed
 border enclosing two glass mixing bowls and four
 hinged tea compartments raised on a slender column
 support with quadruped base and bun feet, stamped
 and numbered 30744. 52 x 37cm

€800 - 1,200

Provenance: Kilsharvin House, Co Meath



Lot 113



Lot 114

113 A SITZENDORF PORCELAIN SUITE OF TAZZAS

the central circular bowl and a naturalistic column with attendant amorini, on a scroll base decorated with applied foliage with two matching attached small tazza. 45cm long, 32cm high

€500 - 800

114 A LARGE 19TH CENTURY PORCELAIN CIRCULAR PUNCH BOWL,

the interior white ground decorated with a hand-painted doe, in landscape, the exterior decorated with landscape panels within a blue fish scale ground with flowers and butterflies and foliage in greens, pinks and reds, on a circular rim foot. 39cm diameter

€500 - 800

115 A 19TH CENTURY FRENCH KINGWOOD VITREEN,

the arched top with swan neck and centred foliate spray above trailing garlands, the single glazed door flanked by glazed sides and canted corners raised on a table base centred by an applied gilt ormolu mask, the entire decorated with applied gilt foliate sprays, rosettes, bound rod banding and therns raised on slender cabriole legs. 85cm wide x 200cm tall x 47cm deep

€3,000 - 5,000



Lot 115





Lot 116

- 116 A 19TH CENTURY ARABIAN SIND
FLINTLOCK MUSKET
with large shoulder stock

€150 - 250

- 117 A 19TH CENTURY ARABIAN FULLY STOCKED
MATCHLOCK RIFLE
with applied white metal mounts and hide covered shoulder stock

€200 - 300



Lot 117

- 118 A BRASS SQUARE TOP TRIVIT
with gadroon rim on scroll feet.

€150 - 200

- 119 A SET OF THREE BRASS FIRE IRONS WITH
BALUSTER TURNED HANDLES;
together with a pair of fire dogs and two short brasses.

€250 - 300



Lot 119

- 120 A SUITE OF OVERSTUFFED UPHOLSTERED
SEAT FURNITURE,
comprising a three-seater settee and a pair of matching
armchairs, covered in yellow damask material.

€1,000 - 1,500

- 121 A 19TH CENTURY BRASS FRAMED CEILING
LIGHT OF BASKET FORM,
with cast leaf collar and downswept beads with terminating
basket, the interior lit on a frame decorated with hanging pendant swags.

€1,000 - 1,500

Lot 121



Lot 120

Lot 120



- 122 A VICTORIAN LOUIS QUATORZE BRASS INLAID EBONIZED WOOD BUREAU DU DAME with arch top cornice above twin fielded panel doors with inlaid foliated scrolls and flower filled urns, applied brass banding and rosettes above a fall front writing section and frieze drawer, raised on turned fluted tapering legs with brass mounts. 80cm wide, 176cm high, 47cm deep

€2,000 - 3,000



- 123 A VICTORIAN LOUIS QUATORZE BRASS INLAID EBONISED WOOD DISPLAY CABINET of over-sized rectangular form, the cornice with cast leaf banding above a single glazed panel door, flanked by putto corbels, the frame decorated with inlaid brass arabesque banding and raised on shaped platform base. 113cm wide, 184cm high, 45cm deep

€2,000 - 4,000

124 A VICTORIAN WHITE MARBLE CASED
MANTLE CLOCK

with brass Roman figural frieze, the case surmounted with a figure of a pensive seated female musician with a lyre, raised on cast brass claw feet. 46cm wide, 52cm high, 20.5cm deep

€1,000 - 1,500



125 A PAIR OF 19TH CENTURY WHITE MARBLE
AND ORMOLU CANDLEABRA

with five sconces amid an arrangement of flowers emanating from a two handled urn raised on square platform base. 52cm high

€1,000 - 1,500





Lot 126

Lot 128A



Lot 128

126

AN EDWARDIAN INLAID SATINWOOD LADIES WRITING DESK,

the top section set back with pierced gallery above three cockbeaded drawers, the central frieze drawer operating a pull back tambor section and a fold out writing slide enclosing three further drawers, the entire decorated with inlaid ribbon tied bellflower swags with foliate scrolls, raised on square tapering legs with plinth feet, 80cm wide, 50cm deep, 108cm tall

€2,000 - 4,000

127

AN IRISH GEORGE IV CARVED GILTWOOD AND ROSEWOOD RECTANGULAR CONSOLE TABLE, IN THE STYLE OF DEL VECCHIO

the white marble top above a gadroon frieze and well carved scroll legs with acanthus carved knees and side rosettes on heavy paw feet, having a mirrored back and raised on a shaped rectangular rosewood platform with gilt beaded edge. 113cm wide x 47cm deep x 93cm tall

€4,000 - 6,000

128

G. FOWLER

Waves breaking on rocky outcrop, with gulls
Oil on canvas, 51 x 76cm
Signed

€600 - 800

128A

AN EDWARDIAN WALNUT FRAMED LOW CHAIR,

the open back with a double scroll crest rail above a central carved and pierced anthemion on baluster turned legs with castors.

€150 - 200

129

A FINE IRISH GEORGE II FLAT CARVED SHAPED RECTANGULAR GILTWOOD MIRROR,

surmounted by a later carved eagle with wings outstretched, the frame with open scrolls and trailing flowers to each side, with leaf scroll terminals. 146 x 93cm

€6,000 - 10,000



Lot 129

Lot 127



130 **DUTCH SCHOOL 18TH CENTURY**
 Revellers in a wooded landscape
 Oil on canvas, 75 x 84cm

€1,500 - 2,000



131 **A CHINESE CARVED IVORY PAGODA SHAPED SHRINE,**
 late 19th Century, the roof panels carved with stylised clouds, in relief, above a pair of panelled doors, containing a seated Buddha, and surrounded by reticulated fencing on a stepped base. 37.5cm high, base 13 x 14.5cm

€400 - 600



132 **A GILT BRONZE FIGURE**
 of a standing troubador, 19th century, with mandolin on associated grey marble plinth. The figure 31cm high

€500 - 800



- 133 **J. M. CRAWFORD**
 Portrait of a woman in red dress, reclining on a sofa, reflected in a
 dressing table mirror
 Oil on canvas, 86 x 112cm
 Signed

Label verso: Glasgow Art Gallery, title "Mrs. G..."

€3,000 - 5,000



134 VICTORIAN SCHOOL
 Portrait of a young gentleman wearing a black coat
 Oil on canvas, 96 x 76cm
 €800 - 1,200



135 VICTORIAN SCHOOL
 Portrait of a grey haired gentleman
 Oil on canvas, 90 x 70cm
 €800 - 1,200

136 THE DRAWINGROOM CURTAINS
 €300 - 500

140

A QUALITY EDWARDIAN SILVER AND GREEN GLASS CENTREPIECE/
EPERGNE,

London 1908, mark of William Hutton & Sons Ltd., in neo-classical style with central wirework casket, twin scrolling arms, on an athenienne frame with paw feet (c.80ozs). The bowl 31cm diameter, the stand 25.5cm high

€3000 - 5000





Lot 141

- 141 A VICTORIAN SHAPED CIRCULAR CHASED SILVER CARD TRAY,
Dublin 1848, R. Salter, with raised foliated border, crested,
on 4 scroll bracket (13ozs). 8" diameter

€300 - 500

- 142 A CIRCULAR THREE-HANDLED TROPHY CUP,
Dublin 1922, of baluster form in the Celtic pattern, decorated
cast banding, roundels and raised spreading feet. 9" high

€700 - 1,000

- 143 A GEORGE III IRISH SILVER POINT HANDLED
SOUP LADLE,
Dublin c.1780, mark of John Pittar, with brightcut
engraved decoration and with embossed shell bowl. 36cm
long

€300 - 400

- 144 A GEORGE III IRISH SILVER PLAIN FIDDLE
PATTERN CAKE SLICE,
Dublin 1813, mark of George Nagle and John Twycross,
the blade with pierced decoration.

€150 - 200

- 145 A PAIR OF GEORGE III SILVER OVAL SAUCE
BOATS,
Dublin 1794, Matthew West, with repousse chased and
engraved foliate decoration and raised on shell and pad
feet.

€3,000 - 5,000



Lot 142



Lot 143



Lot 144



Lot 145



Lot 146

- 146 A SET OF FIVE VICTORIAN IRISH PLAIN FIDDLE PATTERN SILVER TEA SPOONS, Dublin 1846; together with a pair of George III Irish taper handle tea spoons, Dublin 1805, mark of Law. (7)

€100 - 150



Lot 147

- 147 A WHITE METAL QUIVER IN THE MIDDLE EASTERN TASTE, with repousse decoration, inscribed on rim "Devon & Cornwall Archery Society. 1st Prize Presented to Sir Walter Carew Aug 24th 1848". 38.5cm long

€200 - 400



Lot 149

- 148 A PAIR OF GEORGE V PIERCED OVAL BOAT SHAPED TWO HANDLE SILVER BASKETS, London 1919, makers mark Mappin & Webb, on pierced shaped oval bases (40ozs).

€1,000 - 1,500

- 149 A PLAIN SILVER PLATED CIRCULAR SOUP TUREEN with domed lid above wavy rim and twin handles, raised on pedestal foot, stamped EPNS; together with a silver plated fiddle pattern soup ladle, crested.

€200 - 300



Lot 148



150

AN IMPORTANT SUITE OF THREE IRISH GEORGE III SALVERS, Dublin 1782, mark of Robert Breathing, of shaped circular form with shaped beaded borders decorated bell flowers and rams heads, engraved crests with motto 'Never Despair', each on four claw and ball feet (total 138ozs). 2" x 12" diameter, 1" x 20" diameter

€12,000 - 16,000



Lot 151

- 151 A PAIR OF GEORGE III CIRCULAR WAITERS,
Dublin 1822, James le Bas, chased floral banding, with
coat of arms, cast scroll and shell borders on three pad feet
(24ozs). 8" diameter

€1,000 - 1,500



Lot 152

- 152 A GEORGE III SHAPED CIRCULAR SALVER,
Dublin 1818, mark of WN, decorated floral banding with
raised border, gadroon and shell cast on four scroll bracket
feet (13ozs). 8" diameter

€300 - 500



Lot 153

- 153 A VICTORIAN MATCHED THREE PIECE TEA
SERVICE,
London 1842 and Edinburgh 1846 (x2), compressed
melon shape comprising teapot (M.M. Mortimer & Hunt),
cream jug and sugar bowl (47ozs).

€700 - 1,000



- 154 A GEORGE III IRISH SILVER CIRCULAR SALVER,
 Dublin (no date letter), mark probably that of John Laughlin, Jnr (fl.1768-1813), with
 raised pierced sides interspersed with rams' heads and urns in the Neo-Classical taste
 and raised on pierced bracket feet, crested. 46cm diameter

€2,000 - 3,000

- 155 **A SHEFFIELD SILVER PLATED OVAL DOMED DISH COVER,**
with cast foliate handle and with reeded banding. 35.5 x 26.5cm;
together with another lobed oval domed dish cover. (2)

€150 - 250
- 156 **AN OVAL SILVER SWING HANDLED SALT CELLAR,**
London 1900, with shaped gadrooned rim, interposed with scrolling cartouches, lobed body raised on a waved spreading foot (c.4ozs). 13 x 8.5cm wide, 5.5cm high;
together with a silver plated lobed circular bowl, with wavy rim and embossed body, on a circular pedestal foot. 15.5cm diameter, 12cm high;
a white metal tapering tankard, engraved "*Malta Polo Club 1992*", with side handle. 12cm high;
and an electroplated pear form cream jug on pierced scrolling legs (4)

€100 - 200
- 157 **A COLLECTION OF SIX SMALL SILVER DISHES,**
comprising
a pair of Art Nouveau oval dishes, Birmingham 1902, with rose embossed sides;
a similar pair with stylised panel sides, Sheffield 1904 and 1908;
and a pair of pierced shaped circular examples, with ribbon tied rims, raised on ball feet, Chester 1897 (c.5.5ozs in all) (6)

€100 - 200
- 158 **A COLLECTION OF SILVER AND GLASS TRINKETS,**
comprising:
An oblong pen tray, Chester 1903, with pierced shaped sides of scrollwork and foliage, with an embossed base. 24cm wide, 7cm deep;
a scalloped embossed three handled cup, Sheffield 1897;
a silver handled boot hook;
a rectangular glass dressing table jar with pull-off cover, London 1913;
a moulded glass silver mounted trumpet shaped decanter. 23.5cm high;
a glass barrel with plated swing handle and cover;
and two glass paper weights (the silver 5.5ozs in all) (8)

€100 - 200
- 159 **A SET OF THREE SMALL SILVER TIFFANY & CO., SCALLOPED SALTS,**
marked "STERLING", with gilt interiors and raised on ball feet. 4cm diameter;
together with a helmet shaped swing handled pierced bowl, London 1898, with beaded handled and rim, pierced lattice work body, with trailing bellflowers, raised on a stepped oval foot. 14.5cm wide, 9.5cm deep (c.6.5ozs in all) (4)

€50 - 100
- 160 **A COLLECTION OF SILVER TRINKETS,**
comprising:
a modern circular bowl, London 1942, on a circular foot. 9.5cm diameter;
a small cream jug, Sheffield marks;
a tapering Art Deco cream jug, Birmingham marks;
a plain tapering small cup, Chester marks;
and a cut glass piggin with pull-off silver lid, London 1898. 9.5cm diameter (c.12ozs in all) (5)

€150 - 250
- 161 **A COLLECTION OF SILVER DISHES,**
comprising:
a shaped circular bon-bon dish, Chester 1897, the scalloped shaped sides with scallop shell cresting, above pierced latticework and panels of fruit, plain central reserve. 16cm diameter;
an oval dressing table dish, with embossed scrollwork and foliate decoration overall;
a small toast rack, Sheffield marks and with import marks, with stylised central loop handle and plain domed body;
a pair of Victorian silver-gilt shaped rectangular dishes, London 1886, the outset wavy sides embossed with flowers on a stippled ground. 11.5cm wide;
and a white metal bangle (c.8ozs in all) (6)

€100 - 200
- 162 **A PAIR OF SMALL SILVER TAZZAS,**
Birmingham 1927, with import marks, with pierced sides and raised on tapering centre pillar support. 6cm high, 9.2cm diameter;
a pair of silver grape scissors, London 1969. 15.5cm long (c.6ozs in all);
together with a silver plated dish (4)

€100 - 200
- 163 **A LARGE RECTANGULAR SILVER MATCH BOX,**
Birmingham 1901, mark of Arthur & John Zimmerman, the lid with presentation inscription (c.4ozs). 8.2cm x 6cm wide, 3cm high;
Together with a silver engine turned cigarette box, with hinged lid and timber lined interior, Birmingham marks. 8.5cm deep, 11cm wide, 4cm high (2)

€100 - 200
- 164 **AN IVORY CASED BORINI OF LONDON MERCURY THERMOMETER,**
with hinged lid and gold mounted beading. 7 x 3cm;
an ivory match box;
and a silver match box with engine turned decoration, Birmingham 1946 (3)

€100 - 200



- 170 A SET OF SIX VICTORIAN SILVER-GILT DISHES,
London 1897, mark of Holland, Aldwinckle & Slater, of shaped circular form, the outset rims with embossed scallop shells and scrollwork, each set with opaque glass liners (c.17.9ozs). 11cm diameter

€300 - 500

- 171 A VICTORIAN GLASS AND SILVER-GILT MOUNTED CLARET JUG,
London 1894, mark of Horace Woodward & Co. Ltd., the lion form finial bearing a crested shield engraved with motto "LENIS SED FORTIS", on hinged lid, decorated with bands of fruiting vines amongst masks and Bacchic mask spout, the bulbous glass body with star cut base. 28.5cm high

€600 - 1,000

- 172 A VICTORIAN SILVER-GILT BOTTLE COOLER,
London 1896, with wavy rim of stylised scrolls interposed by female masks, above a profusely embossed body of scrolls, ribbon tied swags, twin opposing vacant cartouches, twin ring handles emanating from grotesque masks, raised on stepped circular foot (c.12.5ozs). 11cm high, 10cm diameter

€150 - 250



Lot 170

- 165 A CASED SET OF FOUR SILVER DUCK MENU HOLDERS,
Birmingham 1928;
a set of six place name holders in the form of pheasants and other game;
a pair of silver plated knife rests in the form of stretched pheasants;
two sets of six silver picks, with cock terminals, one set enamelled;
and a set of six coffee spoons, Birmingham marks

€200 - 400

- 166 A COLLECTION OF SILVER MOUNTED DESK ITEMS,
comprising:
a circular inkwell, with hinged lid, Birmingham marks. 10cm diameter;
a twin section rectangular stamp box, with gadrooned rim and suspension spring hinge lid;
a silver framed and ivory calendar display;
a plated magnifying glass;
a glass handled envelope opener;
a silver framed triangular tray (6)

€100 - 200

- 167 A 100 GRAM SILVER BAR,
"100 grammes 999 Fine Silver bullion | Johnson Matthey Bankers Limited | 501857", with its original case;
A cased Churchill commemorative coin, 1965;
A chased and pierced silver belt hook, finely chased with a bird perched on a branch amongst foliage;
a toy model of a Triumph TR3A in red;
And a pocket size telescope (282ft./ 1000 yards) (5)

€200 - 300

- 168 A COLIBRI GOLD PLATED DESK SET,
comprising:
ruler, magnifying glass and a letter opener;
together with a silver child's fork, Birmingham marks;
a plated letter opener;
and a hand cast brass "Wicklow" cross form letter opener (6)

€80 - 120

- 169 A CHINESE GILT METAL OVAL TRAY,
Hong Kong,
with dimpled rim, decorated with central bird and bands of engraved foliage. 34.5 x 47cm wide;
together with a collection of silver plated items, comprising:
an Irish circular tazza, set with Celtic symbols in relief, raised on a circular foot;
a Reed & Barton lotus flower dish;
a cruet stand, etc.

€80 - 120





Lot 176

- | | | | |
|------------|---|------------|---|
| <p>173</p> | <p>A PAIR OF REGENCY STYLE PAINTED TIMBER TABLE LAMPS,
in the form of circular columns on platform bases with ball feet.</p> <p>€200 - 400</p> | <p>175</p> | <p>A MATCHED SET OF FOUR SILVER APOSTLE SPOONS,
London 1913 (x3) and 1914 (x1), mark of Robert Stebbings, with circular bowls and Apostle handle terminals (c.5ozs). 18cm long</p> <p>€100 - 200</p> |
| <p>174</p> | <p>A MATCHED SET OF FOUR IRISH GEORGE III HANOVERIAN PATTERN SILVER BERRY SPOONS,
Dublin 1785 (x1), 1786 (x3), mark of David T. Peter, each with crested handle terminals and gilt embossed bowls with pineapples, grapes and strawberries (c.9ozs). 21.5cm long</p> <p>€150 - 250</p> | <p>176</p> | <p>A PAIR OF SILVER PLATED MEAT COVERS,
each with elaborate leaf wrapped central carrying handles and domed bodies, crested. 38 x 30cm wide, 23cm high (2)</p> <p>€300 - 500</p> |
| | | <p>177</p> | <p>A LARGE SILVER PLATED MEAT COVER,
with central leaf wrapped reeded handle, a lobed band of gadrooning, crested. 56cm wide, 39cm deep, 29cm high</p> <p>€200 - 400</p> |

180

A GEORGE IV INLAID MAHOGANY AND
MARQUETRY FOLDING TOP
CARD TABLE,

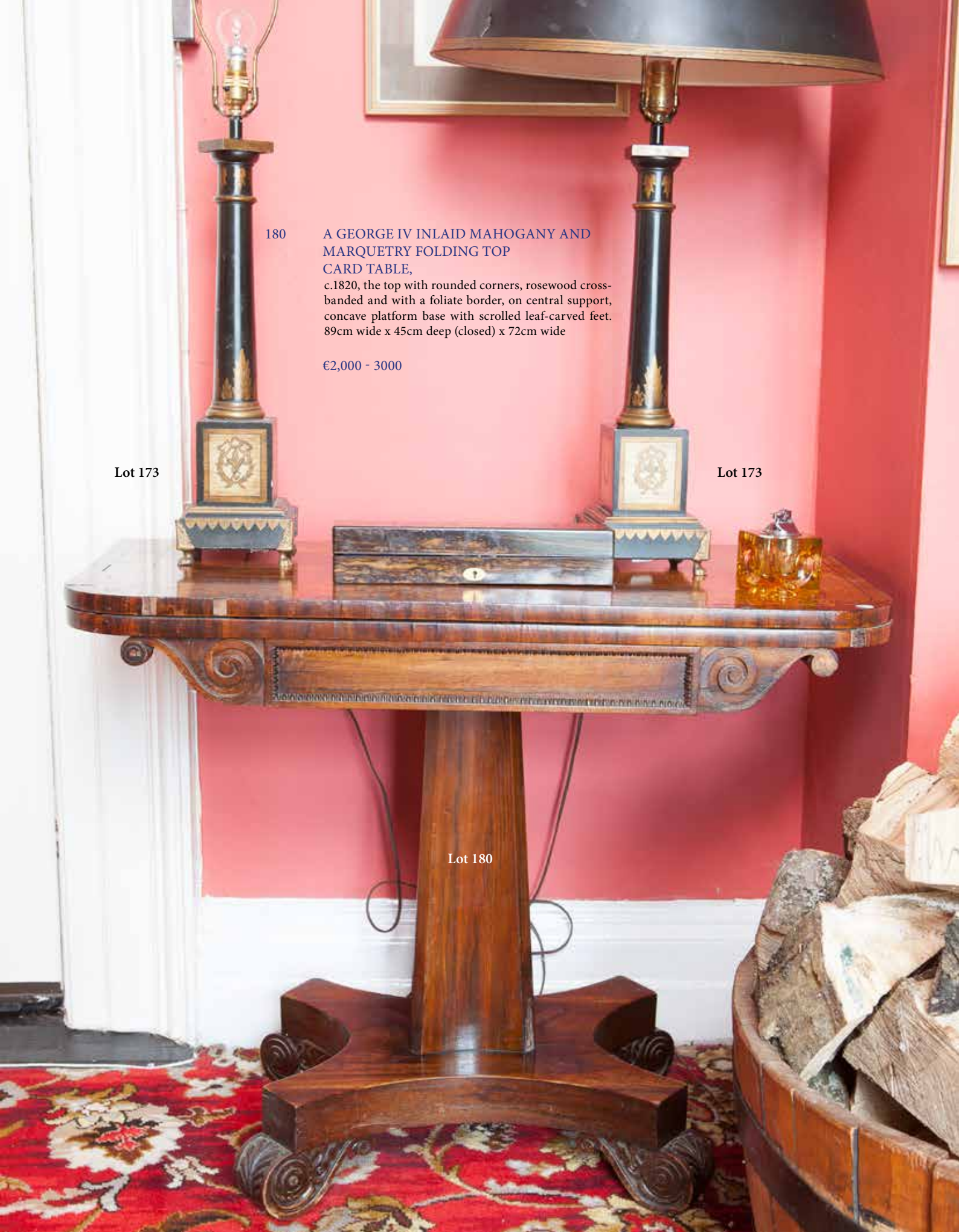
c.1820, the top with rounded corners, rosewood cross-
banded and with a foliate border, on central support,
concave platform base with scrolled leaf-carved feet.
89cm wide x 45cm deep (closed) x 72cm wide

€2,000 - 3000

Lot 173

Lot 173

Lot 180





- 181 A COROMANDEL CASKET,
a japanned table lamp and a table cigarette lighter.
€50 - 100
- 182 A RECTANGULAR BRASS GALLERY CURB
FENDER
and two black painted iron and wire spark guards.
€100 - 200
- 183 A VICTORIAN UPHOLSTERED SHAPED
CIRCULAR CONVERSATION SEAT,
divided into four segments, covered in buttoned crimson
velvet, raised on ebon turned and gilt legs, on castors
€1,000 - 1,500
- 183A A GILT METAL SIXTEEN LIGHT ELECTROLIER,
the grape embellished sconces form a circular girdle sus-
pended from central swagged knob.
€500 - 800
- 184 AN IRISH OVAL GILT-WOOD
COMPARTMENTED MIRROR
in the style of Partridge, with rope-twist frame.
90 x 120cm
€1,000 - 1,500
- 185 A COLLECTION OF TAPESTRY AND
EMBROIDERED CUSHIONS
€200 - 400
- 186 A COLLECTION OF CUSHIONS WITH
HERALDIC EMBROIDERY
€200 - 400

Lot 183A

Lot 184

Lot 183



- 187 A MIDDLE EASTERN INLAID OLIVE WOOD COFFEE TABLE;
a wine table, and a reproduction small table
€30 - 50
- 188 TAXIDERMY: A MOUNTAIN GOAT'S HEAD,
a fine specimen, mounted on a shield.
€200 - 300
- 189 AN EBONISED PIANO STOOL,
with upholstered seat. 56cm wide
€60 - 100
- 190 A COPPER COAL SCUTTLE,
a black painted iron fire tidy and an embossed brass
covered bellows.
€50 - 100
- 191 TAXIDERMY: A GAZELLE HEAD
and another head mounted on a shield.
€100 - 200
- 192 TAXIDERMY: TWO ROEBUCK HEADS
mounted on oak shields.
€150 - 200
- 193 AN IRISH GEORGE IV CARVED MAHOGANY
CONSOLE TABLE,
with mottled marble top, scrolled frieze with pierced
apron on lion monopodia supports with deep concave
platform base. 114cm wide
€2,000 - 3,000
- 194 A MODERN CONTINENTAL MODEL OF A
SAILING SHIP
and an old telephone.
€50 - 100
- 195 A ROSEWOOD BRASS BANDED BOX,
19th Century, the lid with inset brass plaque inscribed
with initials. 33 x 26cm
€60 - 100
- 195A THE CURTAINS IN THE STUDY
€60 - 100
- 195B A GOOD IRISH 18TH CENTURY MAHOGANY
AND BRASS DOOR LOCK,
retaining its brass key
€2,000 - 3,000



Lot 194

Lot 195





- 196 VICTORIAN SCHOOL
Study of a seated terrier
Oil on canvas, 41 x 31cm
Inscribed *M. Lawrie 1893 Xmas*

€200 - 300

- 197 "SPY" (SIR LESLIE WARD)
A set of 6 Vanity Fair coloured caricatures including
H.C.B. McCalmont
Each 34 x 22cm

€250 - 400



- 198 A 19TH CENTURY FINE MIDDLE EASTERN,
OLIVE AND OTHER WOODS AND
MARQUETRY GAMES TABLE,
PROBABLY CAIRO,
the box top folding out to a card table and then with a
backgammon compartment with counter wells, the lids
inlaid as chess boards, the stand on shaped legs joined by
platform centred cross-over stretcher. 96 x 88cm (open)

€2,000-3,000



Lot 198

- | | | | |
|-----|--|-----|---|
| 200 | <p>A SMALL EMBROIDERY OF THE SACRED HEART
‘VICTIM OF LOVE’, and another earlier example, in maple wood frame, 16 x 13 and 31 x 26cm</p> <p>€50 - 100</p> | 208 | <p>WAGNER HEROLDS OF ENGLAND
Fox-Davies, A Complete Guide Heraldry, Berkes General Armory, DeBrett’s Handbook</p> <p>€30 - 50</p> |
| 201 | <p>A COLLECTION OF FOUR CUALA PRESS COLOURED POEMS,
by W.B. Yeats, and others (unframed), 37 x 25cm (variations)</p> <p>€100 - 200</p> | 209 | <p>CRAIG CLASSIC IRISH HOUSES,
Shaffrey Buildings of Irish Towns - a collection related.</p> <p>€200 - 300</p> |
| 202 | <p>BOOKS, A LARGE COLLECTION,
biographies, Irish political interest, humour, approx. 60 volumes</p> <p>€100 - 200</p> | 210 | <p>ETYMOLOGY, DICTIONARIES AND REFERENCE
including Ingamells, A Dictionary of British and Irish Travellers in Italy 1701-1800 (shelf)</p> <p>€100 - 200</p> |
| 203 | <p>A SET OF FOUR GILT BRASS TWO BRANCH WALL SCONCES,
the back plates in the shape of quivers (4)</p> <p>€150 - 250</p> | 211 | <p>TWO SHELVES OF PAPERBACKS AND SOME BIOGRAPHIES</p> <p>€50 - 100</p> |
| 204 | <p>ATTRIBUTED TO DU NOYER,
19th Century
Mountain Landscape
Watercolour over pencil, 17 x 24cm
Inscribed in pencil <i>Mr. Palliser</i></p> <p>Provenance: Neptune Gallery</p> <p>€50 - 80</p> | 212 | <p>A SHELF OF CHILDREN’S BOOKS</p> <p>€20 - 30</p> |
| 205 | <p>A KILIM STYLE HANGING RUG.
210 x 115cm</p> <p>€30 - 50</p> | 213 | <p>OXFORD LIBRARY OF ENGLISH POETRY (3 VOLUMES);
And the remainder of the shelf, poetry and literature.</p> <p>€50 - 100</p> |
| 206 | <p>ATLAS OF THE IRISH RURAL LANDSCAPE,
1997
Jeremy Williams, Architecture in Ireland 1994;
and a collection similar (shelf), approx 40 and pamphlets etc.</p> <p>€150 - 200</p> | 214 | <p>A SHELF OF SPORTING BOOKS
including Irish angling, shooting, golf etc</p> <p>€100 - 200</p> |
| 207 | <p>A SHELF, VARIOUS REFERENCE ETC</p> <p>€50 - 100</p> | 215 | <p>JANES, ALL THE WORLD’S AIRCRAFT 1979-80;
and a shelf of reference.</p> <p>€50 - 100</p> |

216	TWO SHELVES OF BIOGRAPHY AND HISTORY €100 - 200	224	WALSH & NELSON, AN IRISH FLORILEGIUM (II) And others of Irish botanical interest. €200 - 400
217	A SHELF OF ENGLISH LITERATURE (PAPERBACKS) €30 - 50	225	RICHARD DOYLE In Fairyland, a fine facsimile of the 1870 folio, and The Book of Kells, 1976 €100 - 200
218	A COLLECTION IRISH POETRY AND LITERATURE €150 - 200	226	HISTORY, BIOGRAPHY AND NOVELS Two shelves €100 - 200
219	BIOGRAPHY AND HISTORY A LARGE COLLECTION €100 - 200	227	IRISH ART A collection including Crookshank & Glin, The Watercolours of Ireland, The Painters of Ireland, Boydell (ed) Irish Glass, The Castles of Cork, approx. 12 (and the balance of shelf) €200 - 300
220	A SIMILAR LOT, partly Paperback, (2 shelves) €50 - 100	228	A LARGE COLLECTION OF NOVELS, biographies and reference books (3 shelves) €100 - 200
221	OXFORD HISTORY OF ENGLAND A set of 16 €40 - 80	229	A SIMILAR LOT (2 SHELVES) €50 - 100
222	A SHELF OF PAPERBACKS AND SOME RANDOM VOLUMES. €20 - 40	230	TWO SHELVES OF BOOKS of Bloodstock, and general equestrian interest. €150 - 200
223	BURKE'S IRISH FAMILY RECORDS 1976 and MacLysaght Irish Families €50 - 100	231	A SHELF OF BOOKS OF FINE ART and antique interest €150 - 200

- | | | | |
|-----|---|-----|--|
| 233 | ANNALS OF THE KINGDOM OF IRELAND
(THE FOUR MASTERS),
the fine de Búrca reprint of 1990 (7 vols) | 238 | A LARGE QUANTITY OF PAPERBACKS

€30 - 50 |
| | €200 - 300 | | |
| 234 | A HISTORY OF COUNTY DUBLIN,
The Sackville library reprint of 1979 (6 vols) | 239 | A LARGE QUANTITY OF PAPERBACKS

€30 - 50 |
| | €100 - 200 | | |
| 235 | IRISH INTEREST, BIOGRAPHIES
and General approx (20) | 240 | A LARGE QUANTITY OF PAPERBACKS

€30 - 50 |
| | €100 - 200 | | |
| 236 | FORMULA I, AVIATION, MILITARY,
a large collection (3 shelves) | 241 | IRISH INTEREST,
a small collection, including local studies.

€100 - 200 |
| | €100 - 200 | | |
| 237 | A LARGE QUANTITY OF PAPERBACKS

€30 - 50 | 242 | MC CLEARY NASSAU STREET
A Sudden Explosion
Coloured cartoon, 25 x 34cm

€150 - 250 |
| | | | |
| | | 243 | AFTER HOGARTH
The Five Orders of Perriwigs
Black and white engraving by Cook, 20 x 17cm

€50 - 100 |
| | | | |
| | | 244 | MAINLY IRISH INTEREST-
shelf including Curran, 'Dublin
Decorative Plasterwork'

€100 - 200 |

A
 Cornice
 Serenice
 Fore top.
 B
 Architrave
 or Architrave
 or Causa

C
 Colarino or
 Hypotrache
 Lem or friz
 D
 Fregio
 mbricetta
 or necklock

E
 Gutta or
 Drops or
 Buckle.
 F
 Base or
 Full Bell
 tom

G
 Aile de
 Fagon or
 Wings
 Filice or
 Ribbon

I
 Hellos or
 Vitule or
 Spiral
 or Carol.



ATHENIAN
 One Module
 3/4
 vers. Paris 1788



Least
 the Beauty
 of these CAPITEL
 depend as usual
 on the delicacy of
 the Engraving,
 hath Elected
 his own
 hand.



OLD
 ALDER
 PEERIAN
 MANIC.

LEXONIC

COMPOSITE
 or
 HALF NATION

ANTONINIAN
 or
 RICHELIEU
 or
 RICHARD



Lot 246

- 245 AN OXIDISED BRASS STANDARD LAMP
in the form of a fluted Corinthian column, on a stepped
square base with shade.

€100 - 200

- 246 ITALIAN SCHOOL 17TH CENTURY
Portrait of a man, half-length in armour
Oil on canvas, 75 x 62cm

€1,500 - 2,000





Lot 247

Lot 247

Lot 248

Lot 253

Lot 249



Lot 252

- | | | | |
|-----|--|-----|--|
| 247 | <p>A VICTORIAN BRASS CANDLEABRUM,
the three urn shaped candle sconces supporting cut glass icicle drops and raised on turned column and square platform base on cast paw feet. 33cm high</p> <p>€300 - 500</p> | 252 | <p>AN IRON AND BRASS FIRE GRATE
in the George III taste, with serpentine front, the square column tapering legs surmounted with urns, the apron with pierced and engraved decoration.</p> <p>€800 - 1,200</p> |
| 248 | <p>A PAIR OF 19TH CENTURY ORMOLU LUSTRE CANDLESTICKS
in the form of small trees with icicle drops and flanked by young stags, raised on white marble bases. 27.5cm high</p> <p>€600 - 800</p> | 253 | <p>A HEAVY WROUGHT IRON AND WIRE MESH SPARK GUARD
and a brass framed four panel spark guard (2)</p> <p>€100 - 200</p> |
| 249 | <p>A FRENCH CAST BRASS ADJUSTABLE CURB FENDER
in the Neo-Classical taste with surmounted corner pedestal urns and pierced foliate panels, the front cast with ribbon and beaded decoration, on platform base. 155 x 43cm fully extended</p> <p>€600 - 1,000</p> | | |
| 250 | <p>A PAIR OF CAST BRASS FIRE DOGS
in the form of stylised griffons and three miscellaneous fire brasses - a poker and two shovels (5)</p> <p>€400 - 600</p> | | |



- 254 **A SET OF FOUR CAST BRASS WALL SCONCES**
in the form of drapery swags, fitted twin light sconces, electrified. 63cm high

€800 - 1,200

- 255 **A GEORGE IV MAHOGANY WINE COOLER**
of rectangular sarcophagus form, with hinged flat domed lid, the tapering body with fielded panels and raised on heavy paw feet. 77 x 56 x 53cm high

€1,000 - 1,500



Lot 258

- 256 **A VICTORIAN MAHOGANY RECTANGULAR DINING TABLE**
with telescopic extending mechanism, with thumb moulded rim and raised on turned fluted column legs. 154 x 128cm

€1,000 - 1,500

- 257 **A SET OF FOUR EDWARDIAN STAINED BEECH FRAMED DINING CHAIRS**
with tall pierced splats, padded seats covered in red velour and raised on cabriole legs; together with a pair of Edwardian inlaid mahogany pierced splat back dining chairs, similarly upholstered (6)

€400 - 600



Lot 258

- 258 **A PAIR OF FRENCH LATE 19TH CENTURY BRONZE FIGURES,**
depicting 'Harmonie' and 'Peinture', modelled as young women, seated on pedestals after the originals by A.E. Carrier-Belleuse (1824-1887) and Jean- Paul Aubé, respectively, with name plaques and both raised on red veined marble bases. 66cm high

€3,000 - 5,000

- 259 **A PAIR OF 19TH CENTURY ORMOLU MOUNTED MARBLE PEDESTALS**
in the form of Greek Corinthian columns and raised on square platform bases. 123cm high

€1,500 - 2,000



Lot 258

Lot 258

Lot 259

Lot 259



260

A GEORGE III MAHOGANY BREAKFRONT SIDETABLE, the plain top above a central beaded tablet, flanked by rosette plaques heading six leaf carved and reeded tapering legs. 228.8 wide x 84cm deep x 89.4cm high

€4,000 -6,000



261

A 19TH CENTURY INLAID MAHOGANY LONG RECTANGULAR BOWFRONT SIDE TABLE, the plain top above a cross-banded frieze centred with a tablet decorated with oval bellflower motif, raised on six square tapering legs. 255.5 x 80cm

€3,000 - 5,000



262

**A PAIR OF 19TH CENTURY FRENCH CAST
BRASS CANDLEABRA**

each with seven candle sconces, electrified, decorated with scrollwork and human masks on stylised Corinthian columns raised on leaf cast bases with three claw feet and shaped triangular platform bases. 82cm high

€2,500 - 3,500



263

**A LARGE VICTORIAN SIX LIGHT
CHANDELIER**

with cascading circular rows of icicle drops, having scroll arms above a circular tapering basket, and terminating in a facet cut glass ball. 130cm long

€1,500 - 2,000



264

**A SET OF TEN GEORGIAN STYLE MAHOGANY
FRAMED DINING CHAIRS**

in the Hepplewhite taste, with carved arch crest rail above a pierced splat, the frames with incised decoration, having bowfront drop-in seats covered in hide and raised on square tapering legs (8 single and 2 elbow chairs)

€5,000 - 7,000



265

A FINE IRISH GEORGE IV MAHOGANY RECTANGULAR DINING TABLE, ATTRIBUTED TO GILLINGTONS OF DUBLIN

with all-round reeded three-part top raised on triple turned baluster pillars and quadruped supports with brass toe caps and casters, the underside stamped with a serial number. 177.7 x 387.5cm

Provenance: The table appears in the Courtown, Hamilton and Hamilton sale catalogue for the Drummonds as lot 439 11/6/1963 and was illustrated in the catalogue.

(An almost identical triple pillar dining table, stamped 'Gillingtons' was sold by Apter Fredericks of London in recent times)

€25,000 - 35,000



266 A PAIR OF GEORGE III INLAID MAHOGANY DINING ROOM PEDESTALS, AFTER A DESIGN BY GILLOWS

with surmounted reeded lidded urns, with bell finials and having lead lining on a square base with single panel door enclosing a shelved interior, decorated with fluted banding, raised on platform base. 173cm high, 46 x 46cm

Provenance: They appear in the Courtown, Hamilton & Hamilton sale catalogue for the Drummonds as lot 436, 11/6/1963 and were illustrated in that catalogue.

€15,000 - 20,000

These restrained neo-classical urns on Roman pedestals correspond closely to a design by Gillows of 1788, and are very like known executed examples attributed to the same firm.

Used as cisterns or cutlery boxes they appealed to the refined taste of the late 18th Century and indeed came to be regarded as primarily ornamental. They were difficult to make and therefore always expensive. Quoted by S.Stuart in Gillows of Lancaster and London (2008). Gillows himself, writing to a client states, "if you knew the time, expense and difficulty in making them...as well as the waste of wood and cost of materials, you would have a different idea of their value".

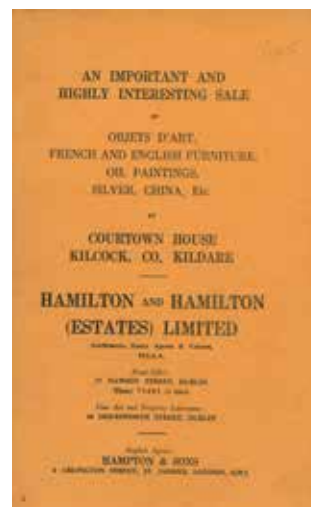
Added to this, many did not survive everyday use, were separated, also from their pedestals, and so it is exceptional to find a pair such as this.



A design by Gillows



The 1963 auction catalogue for the Drummond family







267 **EDWARD GEORGE ARMFIELD**
 River landscape with huntsman and a pack of hounds
 Oil on canvas, 76 x 127cm
 Signed

€3,000 - 5,000



268 **EDWARD GEORGE ARMFIELD**
 River landscape with huntsman holding an otter with a
 pack of baying hounds
 Oil on canvas, 76 x 127cm
 Signed and dated 1910

€3,000 - 5,000



- 269 ITALIAN SCHOOL, 19TH CENTURY
In the style of Vernet
 Coastal scene with fishermen, boats and ships
 Oil on canvas, 76 x 131cm

€1,000 - 2,000

- 270 JOHN NESBITT (1831-1904)
 Seascape at Sundown
 Oil on canvas, 50 x 76cm
 Signed

€800 - 1,200





- 272 AN EDWARDIAN INLAID AND PAINTED MAHOGANY DISPLAY CABINET in the Georgian taste, having moulded arched cornice above a central panel painted with figural scenes, floral sprays and musical motifs, flanked by twin astragal glazed panel doors above a shaped frieze and raised on cabriole legs and pad feet. 154cm wide, 211cm high, 41.5cm deep

€1,000 - 1,500

- 273 A 19TH CENTURY ORMOLU CENTREPIECE, with oval palmette wrapped basket above Greek key banding on central support, flanked by kneeling armorini, on tall conforming pedestal, with scrolled foliate base. 37.5cm high x 29cm wide

€1,000 - 1,500





- 274 A PAIR OF 19TH CENTURY CARVED AND STAINED PINE WALL APPLIQUES in the form of female therms with waists of anthemions above ribbon tied swags, each on a rectangular frame with applied rosettes. 140 x 31cm

€1,000 - 2,000

- 275 A 19TH CENTURY FRENCH GILTWOOD STANDING MIRROR with arched asymmetrical top with scroll and urn finial with single flanking column, with opposing griffin above a jardinière serpentine front base with pierced trellis work, centred by a carved dragon and scroll supports. 260 x 110cm wide

€1,000 - 2,000



- 277 TAXIDERMY - A STUFFED WALL MOUNTED TROPHY HEAD OF A GREATER KUDU, inscribed Somaliland. 1899

€300 - 500

- 278 A LARGE EIGHT LIGHT GLASS CHANDELIER, arranged in two rows, the tubular branches hung with drops and lustres. (appears to incorporate outside elements and is incorrectly assembled)

€500 - 1,000



Lot 277

Lot 275



Lot 280

- 280 T.A.ADAM,
(SCOTTISH PRIMITIVE SCHOOL)
19th Century
A Chapel by a mountain lake with a distillery
Oil on canvas, 75 x 105cm
Signed

€400 - 800

- 281 A GILT BRASS FIVE LIGHT STANDARD LAMP

€150 - 250



Lot 282

- 282 A SET OF SIX VICTORIAN EBONISED AND
PARCEL GILT BALLROOM CHAIRS,
the upholstered backs with ribbon bow cresting, rounded
seats, on turned fluted legs

€400 - 800



Lot 283

- 283 GEORGE KNIGHT (FL.1872-1892)
Fishing in breezy weather, off a harbour
A pair, Oil on canvas, each 39 x 60cm

€2,000 - 3,000

- 284 RICHARD HENRY NIBBS (1816-1893)
A wooded lake landscape with oncoming storm
Oil on canvas, 60 x 120cm
Signed and dated (18)'83

€800 - 1,200

- 286 A THREE PIECE GILT METAL CLOCK
GARNITURE,
French c.1900, with flower porcelain dial and mounts on
blue ground, the clock surmounted by an urn. The clock
35cm high
Now on giltwood velvet covered stands

€200 - 300



Lot 286



Lot 287

- 287 A GREEN MOTTLED MARBLE TABLE CLOCK, French c.1900, the enamel dial with pierced brass dragon, in a pedestal, surmounted and flanked by urns, on outset moulded base. 53cm high

€200 - 300

- 288 A SMALL BRONZE FIGURINE, perhaps Yeats, on marble base and a small bronze caricature head on marble base, 10 x 12cm respectively

€100 - 200



Lot 288

- 289 A PARIAN BUST OF BEETHOVEN; and two Continental painted pottery groups of tramps

€30 - 50



Lot 290

- 290 A BLACK SLATE AND COLOURED MARBLE TABLE CLOCK, late 19th century, the dial with black marble chapter ring inscribed "Waterhouse & Co., Dublin" with a pylon shaped case on moulded rectangular plinth. 34cm high

€250 - 350



Lot 291

- 291 A REGENCY BRASS INLAID CONSOLE TABLE, with striated grey marble top, milled rim above inlaid frieze drawers, on leaf carved in-srolled legs, concave platform stretcher, now with an ebonised and parcel-gilt framed mirror back. 131cm wide, 51cm deep, 95cm high

€2,000 - 3,000

- 292 ENGLISH SCHOOL
C.1900
Portrait of a young woman in low cut red dress with silver and amber necklace
Oil on canvas, 66 x 52cm (unfinished) bears signature 'Lavery'

€1,000 - 1,500



Lot 292



Lot 293

- 293 R.B. HIGGINS, (MODERN IRISH SCHOOL)
An upland stream
Acrylic on board, 18 x 23cm
Signed

€50 - 100

- 294 A PINK MARBLE PEDESTAL,
the blocked and tapering column supporting a revolving
platform, with gilt metal swagging and gadrooning, the
shaft applied with an amorini, on moulded stepped base.
30cm square, 103cm high

€800 - 1,200

- 297 CONTINENTAL SCHOOL, C.1890
Cupid, recumbent, in a landscape
Oil on canvas, 65 x 76cm

€1,000 - 2,000



Lot 297

- 298 AN EBONISED GILT-BRASS ENRICHED
SERPENTINE SIDE CABINET,
19th century, with foliate rim, above a guilloche frieze,
the central door with a ribbon suspended medallion
filled with a coloured stone panel in high relief of a
bird amongst fruiting boughs, with glazed serpentine
sides divided by engaged fluted columns, on plinth
with bun feet, velvet liner interior, with the trade
label of *M & W Jackson, House Furnishers, 80 Grafton
Street*. 135cm wide, 43cm deep, 115cm high

€3,000 - 5,000



Lot 298



Lot 300

299 A LARGE 'BOULLE' EBONISED AND GILT METAL ENRICHED SERPENTINE SIDE CABINET,

19th century, with contre-partie brass inlay on a red 'tortoiseshell' ground, fitted with two doors with central ormolu Bacchic masks, bowed sides divided by columns, on plinth base. 127cm wide, 50cm deep, 120cm high

€2,500 - 4,000

300 AN EBONISED 'BOULLE' GILT METAL ENRICHED SIDE CABINET,

19th century, the door with central oval medallion, on outset plinth base. 109cm high, 80cm wide, 36.5cm deep

€800 - 1,200

- 301 ENGLISH PRIMITIVE SCHOOL,
Early 19th Century
A Drover and his cattle in a wooded landscape
Oil on canvas, 50 x 57cm

€250 - 400

- 302 JAMES ENGLISH
Derelict Cottage
Oil on canvas board, 34 x 45cm
Signed and dated 1978

€150 - 250

- 303 CONTINENTAL SCHOOL,
19th Century
A fortified river side town with bridge
Oil on canvas, 55 x 66cm

€200 - 300

- 304 R.A. MILEY,
Irish 19th Century School
A red setter in a landscape
Oil on canvas, 49 x 59cm
Signed, the frame inscribed "CHIEF 12.5.88"

€500 - 800

- 305 ENGLISH SCHOOL,
19th Century
A canal lock with figure on a bridge
Oil on canvas, 28 x 25cm

€100 - 200





Lot 306

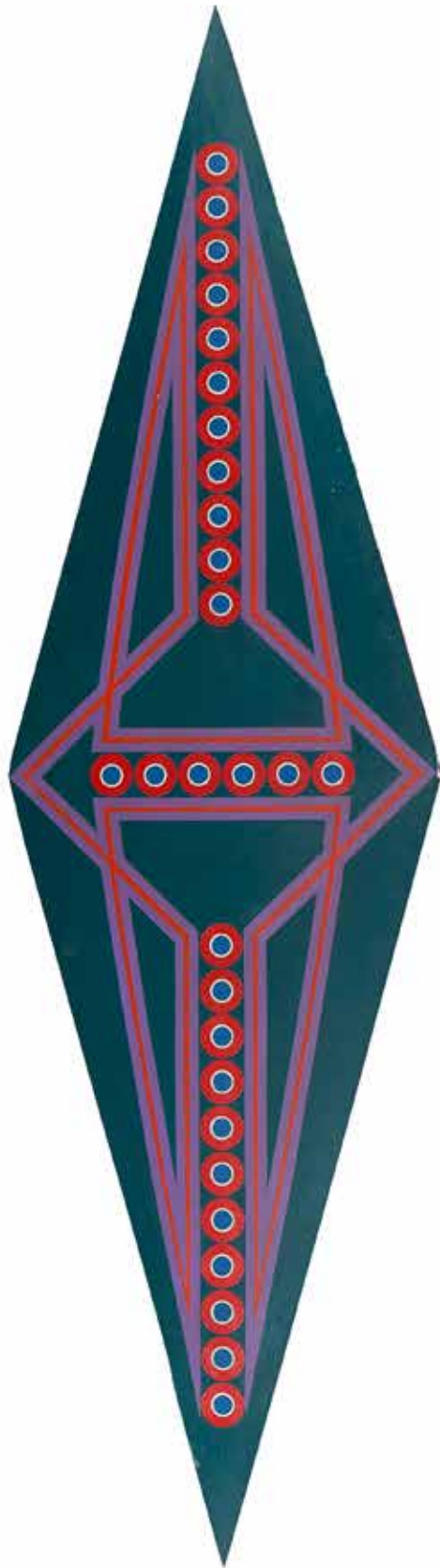
Lot 307

- 306 A GEORGE IV MAHOGANY GENTLEMAN'S WARDROBE,
the moulded cornice above twin fielded cupboards above a chest of two short and two long cockbeaded drawers with brass handles, raised on bracket feet, with a serpentine outline apron. 128cm wide, 208cm tall
€700 - 1,000
- 307 A MAHOGANY RECTANGULAR CHEST OF FOUR LONG DRAWERS,
with brass handles and raised on bracket feet. 94 x 49cm
€100 - 200
- 308 A 19TH CENTURY MAHOGANY RECTANGULAR TOP BEDSIDE TABLE,
on a polygonal tapering banded centre column on downswept tripod legs. 55 x 41cm
€100 - 200
- 309 A CHINESE RECTANGULAR WOOL RUG,
with a central oval reserve within floral guard stripes. 290 x 185cm
€100 - 200
- 310 A 19TH CENTURY CONTINENTAL CANOPY BACK BED,
the arched back with heavily carved egg and dart banding above scroll corbels and enclosing a button upholstered head board, the back panel with oval fielded panel and carved scroll ends raised on bun feet. 158 x 203cm
€1,000 - 1,500
- 311 A SMALL GILTWOOD AND GESSO NARROW WALL MIRROR.
142 x 42cm
€40 - 60

Lot 308



Lot 310



Lot 315

- 313 A 19TH CENTURY FRENCH WALNUT FRAMED SIDE CHAIR,
with oval padded back with rounded seat raised on slender cabriole legs

€100 - 150

- 313A A PAIR OF MAHOGANY SINGLE DOOR
BEDSIDE CUPBOARDS
on square tapering legs. 40cm wide

€250 - 350

- 314 A MAHOGANY FRAMED LOW COFFEE TABLE

€10 - 20

- 315 EVIN NOLAN (B. 1930)
Three Hold No.3
Oil on panel, 210 x 60cm, diamond shaped
Signed verso, label verso

€600 - 1,000

- 316 A MAHOGANY SHAPED OVAL OCCASIONAL
TABLE
with pie crust rim on four slender cabriole legs with
undertier. 70cm wide

€50 - 100

- 317 A GEORGIAN STYLE MAHOGANY
BOWFRONT WARDROBE,
the arcaded cornice above twin panel cupboard doors
above a single drawer on bracket feet. 133cm wide

€100 - 150



- 318 A MAHOGANY CORNER TABLE
on slender cabriole legs

€30 - 50

- 319 A 19TH CENTURY MINTON PARIAN
PORCELAIN GROUP
of a young girl carrying water in an urn atop her head with
an attendant young boy. 46cm tall

€200 - 300



- 320 A GRAND TOUR 19TH CENTURY BRONZE
FIGURE OF VENUS,
after the antique, standing on rectangular platform with
paw feet. 49cm tall

€250 - 300



Lot 321

- | | |
|---|--|
| <p>321 AFTER COUSTEAU,
A pair of Spelter Marly horses with attendant riders, on oval timber stands. 46cm tall</p> <p>€100 - 200</p> | <p>325 A SMALL MAHOGANY CIRCULAR OCCASIONAL TABLE
on turned centre pillar and reeded downswept tripod base with brass paw toe caps. 51cm diameter</p> <p>€50 - 100</p> |
| <p>322 A PAIR OF LATE 19TH CENTURY SPELTER FIGURES
of a fisherman and his wife. 38cm tall</p> <p>€30 - 50</p> | <p>326 A 19TH CENTURY MAHOGANY CANOPY BED,
the serpentine front canopy on plain side supports and button back head board, the end with arched serpentine form arched by columns with scroll supports. 160 x 215cm</p> <p>€1,500 - 2,000</p> |
| <p>323 AN INLAID MAHOGANY LOW SNAP TOP GAMES TABLE,
the top with inlaid chequer board on a turned centre pillar and tripod base. 50 x 38cm</p> <p>€50 - 70</p> | |
| <p>324 A MAHOGANY OVAL OCCASIONAL TABLE
on a pair of turned end supports with stretcher and downswept legs. 88 x 53cm</p> <p>€50 - 100</p> | |



Lot 324

Lot 326



Lot 325





Lot 328

- 327 ANNE FITZGERALD (20TH/ 21ST CENTURY)
An Aran fisherman with a curragh being carried in the background
Mixed media, 150 x 100cm
Signed

€1,000 - 1,500

- 328 IRISH SCHOOL (19TH CENTURY)
A Man Seated Polishing a Silk Top Hat
Oil on canvas, 60 x 50cm

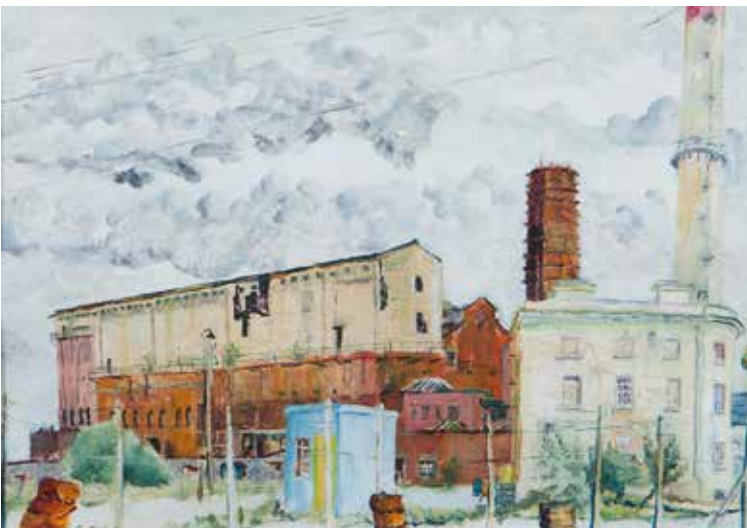
€100 - 200

- 329 A PAIR OF GILT-METAL FRAME WALL LIGHTS
WITH CUT ICICLE DROPS IN THREE
GRADUATED TIERS.
28cm high

€50 - 100

- 330 ENGLISH SCHOOL
A Power Station
Oil on paper, 24 x 34cm
Signed indistinctly

€30 - 50



Lot 330

- 331 A 19TH CENTURY CONTINENTAL
MAHOGANY FRAMED CANOPY BED,
the arched canopy with rails and side curtains above a
buttoned and punched head board and a tub shaped end
board with moulded panel. 156 x 206cm

€1,000 - 1,500



Lot 327

- 332 **A BRASS TABLE LAMP**
in the form of a square fluted Corinthian column on rectangular plinth with leaf bosses. 51cm tall.

€250 - 350

- 333 **A BRASS TABLE LAMP**
In the form of a fluted Corinthian column on rectangular plinth with oval bosses. 58cm tall

€250 - 350

- 334 **A JACOBAN STYLE OAK TWO SEATER HALL SEAT**
with double x-frame support, the carved crest rail carved with foliage and centred by carved crossed swords, having scroll arm supports. 129cm wide

€300 - 500





Lot 337



Lot 336



335 AN EDWARDIAN INLAID MAHOGANY BOWFRONT WRITING DESK with tooled leather top above a bowfront central drawer flanked by pairs of side drawers decorated with satinwood banding and raised on squared tapering legs with castors

€200 - 300



Lot 335

336 A PAIR OF GRAND TOUR STYLE TEMPLE ORNAMENTS with inset statues on square bases. 27cm tall

€30 - 50

337 IRISH SCHOOL (18TH CENTURY) Half-length Portrait of A Lady with a Headscarf Pastel, 69 x 52cm

€300 - 500



- 338 A PAIR OF SMALL BRASS FIRE DOGS
in the form of Sunflowers. 18cm tall

€80 - 120

- 339 JONATHAN WADE (1941-1973)
Aspect
Oil on canvas, 50 x 30cm
Signed and labelled verso

Exhibited: Arts Council Jonathan Wade Retrospective 1975,
Trinity College, Dublin.,

€800 - 1,200

Lot 339



- 340 CURTAINS IN THE MASTER BEDROOM

€50-80

Lot 338

- 341 A LOUIS QUATORZE STYLE MAHOGANY BOMBE COMMODE, the marble top above three graduated drawers flanked by male and female applied cast thermes. 72cm wide

€400 - 600

- 342 A RECTANGULAR PRINTED WOOL PANEL depicting a lion and lioness

€50 - 80

- 343 A LATE VICTORIAN WALNUT DRESSING TABLE WITH CENTRAL CRUTCH FRAME MIRROR PANEL, flanked by central glazed cupboards and open scroll panels with hinged side mirror panels above four short drawers above two long drawers raised on short cabriole legs. 113cm wide

€400 - 600



Lot 341



Lot 343



Lot 342



Lot 344



Lot 345

- 344 AN EDWARDIAN MAHOGANY SHAPED CIRCULAR CURIO TABLE
with glazed lift top raised on slender cabriole legs with pad feet

€150 - 250

- 345 A MODERN BRASS SHIPS CLOCK AND BAROMETER
mounted on a mahogany panel. 41 x 19cm

€30 - 50



Lot 347

- 346 A VICTORIAN MAHOGANY OVAL CENTRE TABLE,
the top with egg and dart rim, raised on a turned tapering central pillar with bead and reed decoration, on four well carved scroll legs with heavy paw feet. 130 x 93cm

€300 - 500

- 347 JONATHAN WADE (1941-1973)

Seated Figure
Oil on canvas, 50 x 30cm
Signed

Exhibited: Arts Council, Jonathan Wade Retrospective 1975, Trinity College, Dublin.

€800 - 1,200



Lot 347



Lot 347A

- 347A A GREEN MARBLE COLUMN,
with cut flutes on an octagonal base.
110cm tall

€200 - 300

- 348 A VICTORIAN ROSEWOOD OCTAGONAL WORK TABLE,
the lift top enclosing a fitted interior and tapering column well, raised on scroll tripod base.
43cm diameter, 77cm tall

€300 - 500

- 349 A STUFFED PHEASANT MOUNTED ON A NATURALISTIC BASE,
by J. Foley 1994; together with porcelain painted model of a pheasant

€100 - 200

- 350 A VICTORIAN INLAID WALNUT DISPLAY CABINET
with single glazed door decorated with inset Sevres style porcelain panel and applied gilt brass cast mounts raised on ebon bun feet. 77cm wide

€600 - 800

- 351 A PAIR OF CAST BRASS FIRE DOGS
in the form of classical female figures on plinth bases. 44cm tall

€100 - 150



Lot 351



Lot 350



352

**A 19TH CENTURY INLAID MAHOGANY
RECTANGULAR CHEST**

of four long graduated drawers with cast brass ring handles surmounted by ribbon tied swags and eagles raised on bracket feet. 90 x 51cm

€200 - 400



353

AN EMPIRE MAHOGANY ARMOIRE

the top with gadroon banding above a single drawer with lion mask handles, with twin cupboard doors enclosing an interior fitted with pull out shelves and an eight drawer compartment above a chest of two short and one long drawer, flanked by plain columns and bun feet. 136cm wide

€1,000 - 1,500



354

A LARGE 19TH CENTURY DUTCH ARMOIRE, the heavy cornice with egg and dart banding above twin arched and fielded cupboard doors flanked by griffon scrolls and trailing bellflowers, raised on heavy carved shell capped cabriole legs with paw feet. 155cm wide, 234cm tall

€1,500 - 2,000



Lot 355

- 355 A GEORGE IV INLAID MAHOGANY SQUARE OCCASIONAL TABLE
with top inlaid with specimen timbers raised on a turned centre pillar and tripod base. 46cm square

€300 - 500

- 356 A CHINESE CARVED CHERRYWOOD TORCHERE STAND
with inset marble top raised on slender supports with x-frame stretcher, decorated carved floral panels. 90cm tall

€200 - 400

- 357 BRIDGIT RYNN
A large carved wood standing figure of a man, 135cm high

€800 - 1200



Lot 356



Lot 357





Lot 359

- 359 A 19TH CENTURY MAHOGANY FRAMED FOUR POSTER BED, the moulded cornice canopy above a button back head board and front columns carved with entwining vine legs with acanthus carved capitals. 204 x 152cm
- €1,000 - 1,500

- 360 A PAIR OF BLUE AND WHITE PORCELAIN LAMPS of baluster form the white ground decorated with fish and nets. 32cm tall
- €100 - 150

- 361 A PAIR OF EDWARDIAN INLAID MAHOGANY CORNER DISPLAY CABINETS with single glazed door, decorated satinwood banding on square tapering legs. 64cm wide
- €400 - 500



Lot 361

- 362 A SMALL MAHOGANY OCCASIONAL TABLE with lyre shaped end supports. 52cm wide
- €30 - 50

- 363 A VICTORIAN INLAID SYCAMORE
WARDROBE
the moulded cornice above a single large mirror cupboard
door, decorated rosewood banding and boxwood string-
ing raised on a platform base. 126cm wide

€600 - 1,000

- 364 A GEORGE III STYLE MAHOGANY
RECTANGULAR SIDE TABLE,
the top with gadroon rim and carved apron centred by
a scallop shell, raised on cabriole legs with claw and ball
feet. 123cm

€300 - 500

- 365 A GEORGE III STYLE MAHOGANY SQUARE
BEDSIDE LOCKER,
the moulded top with canted corners above a single cup-
board, raised on cabriole legs with paw feet. 36cm

€150 - 250



Lot 363



Lot 360

Lot 365



Lot 364



Lot 366

- 366 A PAIR OF JAPANESE SATSUMA STYLE POTTERY BALUSTER VASES decorated with painted panels depicting nobles in garden landscapes. 57cm high

€100 - 200

- 367 A 19TH CENTURY COPPER HOT WATER URN with twin handles on a square base. 37cm high

€100 - 200

- 368 A MARBLE TOP CIRCULAR LOW TABLE

€50 - 100



Lot 367

- 369 A BRASS TWIN HANDLED URN and an oval Jardinere

€50 - 100

- 370 A WALNUT FRAMED SINGLE SCROLL END SEAT raised on cabriole legs

€150 - 200



Lot 369



Lot 370

- 371 A MISCELLANEOUS COLLECTION OF TILES
with printed views etc.

€20 - 30

- 372 THREE DECORATIVE SABRES

€20 - 40

- 373 20TH CENTURY SCHOOL
Cottage within a wooded pastoral landscape
Oil on canvas, 58 x 89cm
Signed

€30 - 40

- 374 L. SAMUELSON (20TH CENTURY)
A Couple in an Interior
Oil on canvas, 90 x 60cm

€100 - 200



Lot 371



Lot 372



Lot 374



Lot 373



375 G NEGRETE (20TH CENTURY)
Coastal Landscape
Oil on canvas, 60 x 90cm

€30 - 50

376 CIANO (20TH CENTURY)
A Continental Street Scene
Gouache, 60 x 90cm
Signed

€50 - 100



377 SULLIVAN (20TH CENTURY)
A Portrait of a Horse and Cowboy
Oil on canvas, 60 x 50cm

€50 - 100



379

ENGLISH SCHOOL, 19TH CENTURY

Portrait of John Green Daley Esq. half-length seated,
Oil on canvas, 109 x 86 cm

The gilt frame with inscription: *"Presented on the Occasion of his retirement from the management of the Bowling Iron Works, with which he was connected for 50 years, by the agents and workmen, May 9th 1842"*

€800 - 1,200



Lot 380

- 380 THOMAS GREAVY,
20th Century
A Cottage in a West of Ireland Landscape
Oil on canvas, 39 x 49cm
Signed

€200 - 300

- 381 A GILTMETAL RELIEF PORTRAIT BUST OF
RUBENS,
Framed, 45 x 34cm

€100 - 200



Lot 382

- 382 AFTER JAMES MALTON
Views of Dublin
Coloured reproductions and a collection of other prints

€50 - 100

- 383 A VICTORIAN STUMPWORK AND
NEEDLEPOINT PANEL,
depicting a floral spray. 44cm squared in a rosewood
frame.

€50 - 100



Lot 381

- 384 ROGER,
20th Century
Marshland at Dublin with Rowing Boat
Oil on canvas

€30 - 50



Lot 383



Lot 384



Lot 385

- 385 BORNETT,
20th Century
Parisian Street Scene
Oil on canvas, 60 x 89
Signed

€50 - 100

- 386 20TH CENTURY SCHOOL
A Wooded Landscape with Cottage
Oil on canvas, 60 x 90cm;
And a smaller Wooded River Landscape

€50 - 80

- 387 19TH CENTURY PHOTOGRAPHS,
including a shipwreck, in stained wood frames.
40 x 62cm (frame)

€50 - 100

- 388 FOUR COLOUR PRINTS DEPICTING DUBLIN

€20 - 40



Lot 386



Lot 386



Lot 387



Lot 389

- 389 IRISH SCHOOL,
20th Century
A View along the Liffey
Oil on canvas, 39 x 59cm

€50 - 100

- 390 A WROUGHT IRON OPEN FRAME WASH
STAND
with oval mirror backs.

€50 - 100



Lot 392

- 391 A COLLECTION OF SHOOTING PRINTS

€100 - 150

- 392 20TH CENTURY SCHOOL
A Continental Harbour
Oil on canvas, 70 x 90cm

€50 - 100



Lot 391

- 393 GERARD MARJORAM (B.1936)
Connemara Lake and Mountain Landscape
Oil on canvas, 41 x 90cm
Signed

€300 - 400



Lot 393

- 394 TWO PRINTED WOOL WALL HANGINGS

€60 - 80

- 395 AN EDWARDIAN STYLE PAINTED TWO-SEAT SETTEE,
the oval cane backs with central panels above cane seat with loose cushion, raised on turned tapering legs decorated with painted floral sprays and acanthus leaf collars.

€200 - 400



- 396 AN EDWARDIAN INLAID MAHOGANY THREE-PIECE DRAWING ROOM SUITE,
comprising two-seater settee and two armchairs upholstered in red fabric raised on square tapering legs.

€200 - 300



Lot 394

- 397 A LOUIS SEIZE STYLE GILTWOOD AND PAINTED FOUR-PIECE SALON SUITE,
comprising two three-seater settees and two elbow chairs, the frames decorated with band reel, raised on turned fluted legs.

€800 - 1,200



Lot 397



Lot 396



Lot 399

- 398 A PAIR OF MAHOGANY SMALL OCTAGONAL TOP WINE TABLES on turned centre pillar and tripod bases.

€20 - 30

- 399 A CAST BRASS CIRCULAR TWO TIER PLANT STAND, on cast paw feet.

€20 - 30

- 400 A GEORGE III STYLE INLAID MAHOGANY CIRCULAR BREAKFAST TABLE, on turned centre pillar and reeded downswept quadruped base. 120cm diameter

€200 - 300

- 401 A MAHOGANY BOWFRONT DISPLAY CABINET with single glazed door on cupboard base.

€50 - 80

- 402 A COLLECTION OF RED LACQUER BOWLS ETC.

€20 - 40



Lot 401



Lot 402

403 A MISCELLANEOUS COLLECTION OF
BRASSWARE

€20 - 40

404 AN EDWARDIAN INLAID MAHOGANY
FRAMED SALON CHAIR,
upholstered with red velvet material and raised
on slender cabriole legs.

€50 - 80

405 NOEL HANLON
Castle in Lake and Mountain Landscape
Oil on canvas, 60 x 90cm
Signed;
And miscellaneous paintings

€50 - 100

406 GERARD MARJORAM (B.1936)
Boats in Wooded Lake and Mountain Landscape
Oil on canvas, 50 x 75cm
Signed

€300 - 400

407 JAMES ENGLISH
A Tinker's Encampment
Oil on canvas, 44 x 60cm
Signed

€200 - 300



Lot 403



Lot 404



Lot 405



Lot 407



Lot 408

408 A WALNUT FRAMED TWO-SEATER SETTEE
with oval panel raised on cabriole legs.

€100 - 200

410 A FRENCH BRASS CASED WALL CLOCK
with enamel dial inscribed *Marbier* with hanging
chain weights and pendulum.
103cm tall

€100 - 200

409 A GEORGIAN INLAID OAK RECTANGULAR
LIFT TOP COFFER,
the panelled lid above four panels with inlaid diamond
motifs. 121cm wide

€300 - 500

411

A 19TH CENTURY FRENCH CIRCULAR
GUERIDON TABLE,
the top inset with brass tray, the frieze inset with porcelain
panels and raised on ebon supports with platform base, with
central brass urn. 56cm wide

€200 - 400





Lot 412

- 412 **EVIN NOLAN (B. 1930)**
Abstract composition-green
Oil on canvas laid on board, irregular, 112 x 183cm
Signed and dated (19)'75 verso

(See note on page 163)

€600 - 1,000

- 413 **A SUITE OF UPHOLSTERED SEAT FURNITURE**
Comprising a set of four button back armchairs and a button back Chesterfield roll back couch, all similarly covered in crimson dralon (5)

€300 - 500

- 415 **A WALNUT VENEER RECTANGULAR THREE TIER WHAT-NOT**
raised on turned fluted columns. 58.5 x 39.5 x 94cm high

€200 - 300



Lot 413



Lot 415



- 416 A MAHOGANY FRAMED FULL SIZE SNOOKER TABLE,
by Burroughs and Watts Ltd, Dublin.
386 x 206cm; and an over-table light
(Please note that the purchaser is *entirely* responsible for the removal of this lot)

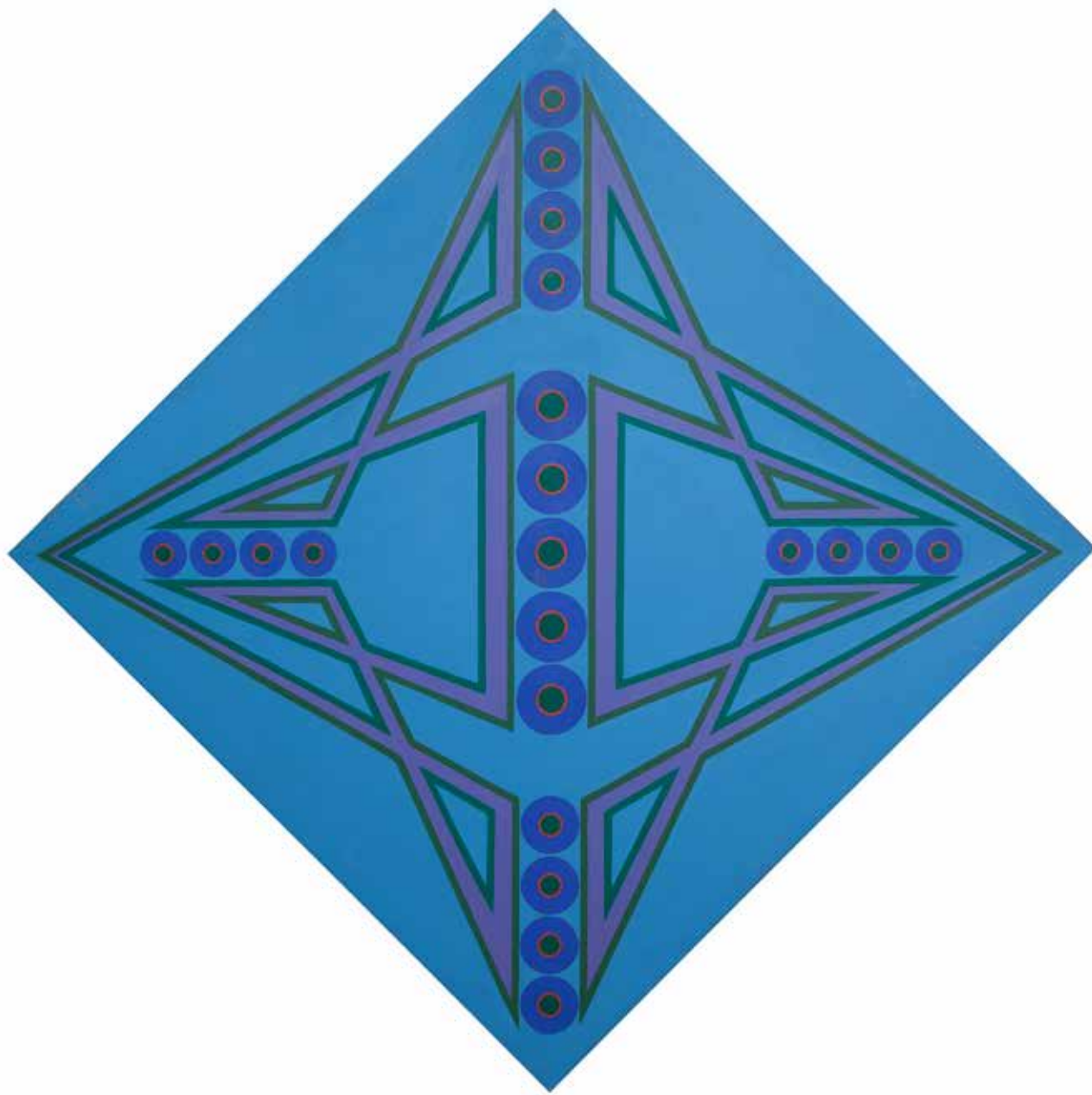
€2000 - 4000

Evin Nolan (b.1930, Kildare) is a painter and sculptor, best known for using multiple part shaped canvasses. Primarily a self-taught artist, Nolan began painting watercolours in the early 1950s but later progressed to working with mixed media. He was awarded first prize at 'Art in Context', Belfast, in 1975 and two Taylor Prizes, for landscape painting and watercolour painting. He had numerous one-man shows through the 1970s and early 1980s. The RHA Gallagher Gallery held a show of his work in 1991. His work is represented in the collections of University Colleges, Dublin and Galway, Trinity College, Dublin and in the Irish Museum of Modern Art.

Jonathan Wade (1941-1973) was born in Dublin. He studied part-time, for three years at the National College of Art. He moved to London in 1962, working in an oil company depot while continuing to paint in his spare time. His first solo show was held in 1966 and he exhibited 'Painting '67' at the Royal Hibernian Academy the following year. In 1968 he held his second solo show, this time at the RHA gallery in Ely Place. An Irish Times reviewer noted that his images 'have a ferocity which, if they can attain splendour as well, would rise to the quality of Goya...'. The Evening Press found Wade's world 'eerie and haunted'. He continued to exhibit widely and successfully and his work was purchased by the Arts Council, the Hugh Lane Municipal Gallery of Modern Art, Trinity College and CIE amongst others. Wade, died on January 22nd 1973 following an accident on a motor bike.

Michael Ashur was born in Dublin in 1950 and was a self-taught artist. Brian Fallon wrote of his work : "These pictures glow with the incandescence of an electric storm. But there is a delicacy too; some of the superimposed colours are as filmy as successive layers of transparent coloured gauze...Just by what calculation he works out his sometimes almost incredibly involved geometrical forms, I cannot guess. Vasarely does this kind of thing too, of course, but then Vasarely is known to hire teams of mathematicians and computerisers; Ashur, presumably, works them out for himself." Ashur was represented in Dublin by the David Hendriks Gallery and was included in many joint exhibitions, particularly the Irish Exhibition of Living Art, Independent Artists and the Oireachtas Art Exhibition.

He also held several one-man shows in the mid 1970s. There are examples of his work in the art collections of University College Dublin, The Arts Council and formerly in the Bank of Ireland.





Lot 417

- 417 A BURROUGHS AND WATTS SNOOKER SCORE BOARD,
snooker and pool balls, a wall mounted cue stand and a
collection of snooker cues, extensions etc.

€500 - 800

- 418 A LARGE OVAL GILDED FRAME WALL
MIRROR,
two standing ashtrays, ornaments etc.

€80 - 120



Lot 419

- 419 TAXIDERMY - A SEMI ANTIQUE TIGER SKIN
RUG ON A FELT BACKING.
273cm long

€300 - 500

- 420 AN OLD STYLE 'HIS MASTERS'S VOICE'
GRAMOPHONE PLAYER AND HORN

€60 - 80

- 421 A CHROME SPIRIT DISPENSING STAND
and miscellaneous plated goblets, tankards and sundry
bar effects

€50 - 80



Lot 420



Lot 421

- 422 EVIN NOLAN (B. 1930)
 Abstract composition-Blue
 Oil on canvas laid on board, irregular, 122 x 150 cm
 Signed and dated (19)'75 verso

€600 - 800



- 423 EVIN NOLAN (B. 1930)
 Abstract Composition - blue discs
 Oil on canvas, 183 x 77cm
 Signed and dated (19)'70 verso

€300 - 500



Lot 427

- 427 JAMES ENGLISH RHA (B.1946)
An Old Farmstead
Oil on canvas, 50 x 75cm
Signed and dated (19)'78

€250 - 350

- 428 MICHAEL ASHUR (1943-2012)
Celestial Abstract
Mixed media on board, 58.5 x 199.5cm
Signed and dated 1974

€600 - 1,000

- 424 RACHEL STRONG (20TH CENTURY)
Gymnast in a Box
Acrylic on board, 61 x 61cm
Signed

€200 - 400

- 425 RACHEL STRONG (20TH CENTURY)
Woman in a window
Acrylic on board, 61 x 61cm
Signed

€200 - 400

- 426 DEBORAH BROWN (B.1927)
"Gouache on Paper"
Gouache on paper, 42 x 59cm
Signed and dated (19)'75

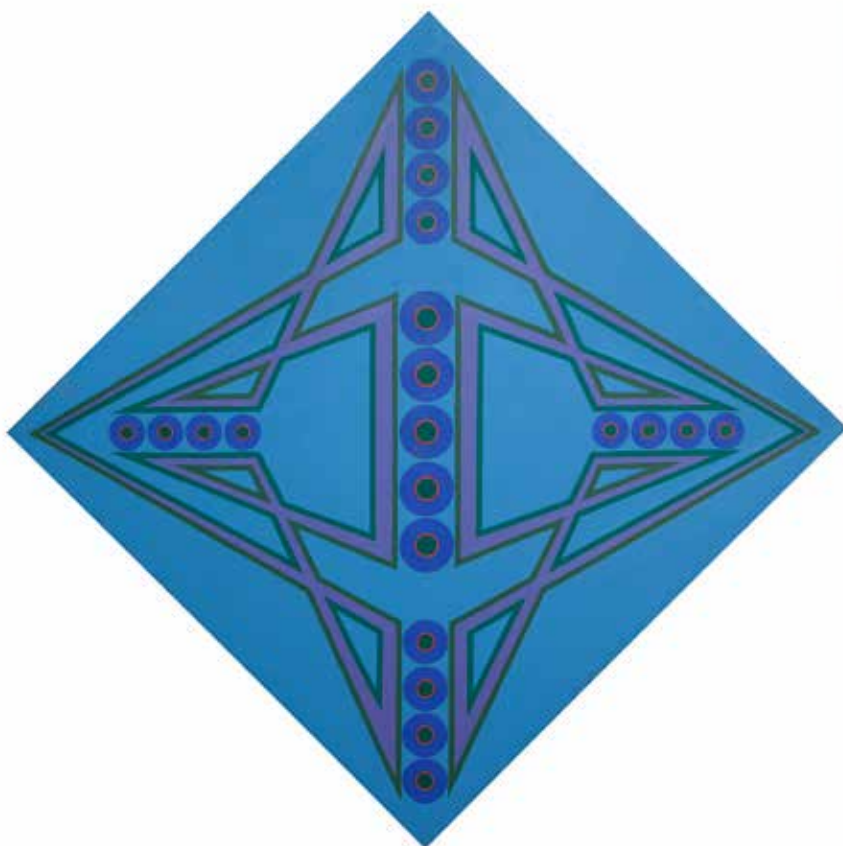
€150 - 250



Lot 428

429 EVIN NOLAN (B.1930)
 Abstract Composition - Green
 Oil on canvas laid on board, irregular 122 x 287cm
 Signed verso

€600 - 1,000



30 EVIN NOLAN (B.1930)
 Diamond Abstract - blue discs
 Oil on canvas, 169 x 168cm

€400 - 600



Lot 433

431 ANNE S. KING-HARMAN (1950-1970)
Bluebell wood
Oil on board, 50 x 70cm
Signed

€200 - 400

432 MODERN SCHOOL
Abstract composition
Mixed media, 89 x 66cm;
Together with a diptych by the same hand (2)

€80 - 120

433 KEVIN SIMMS (B.1932)
A View of Leixlip
Oil on board, 58 x 78cm
Signed.
Together with a collection

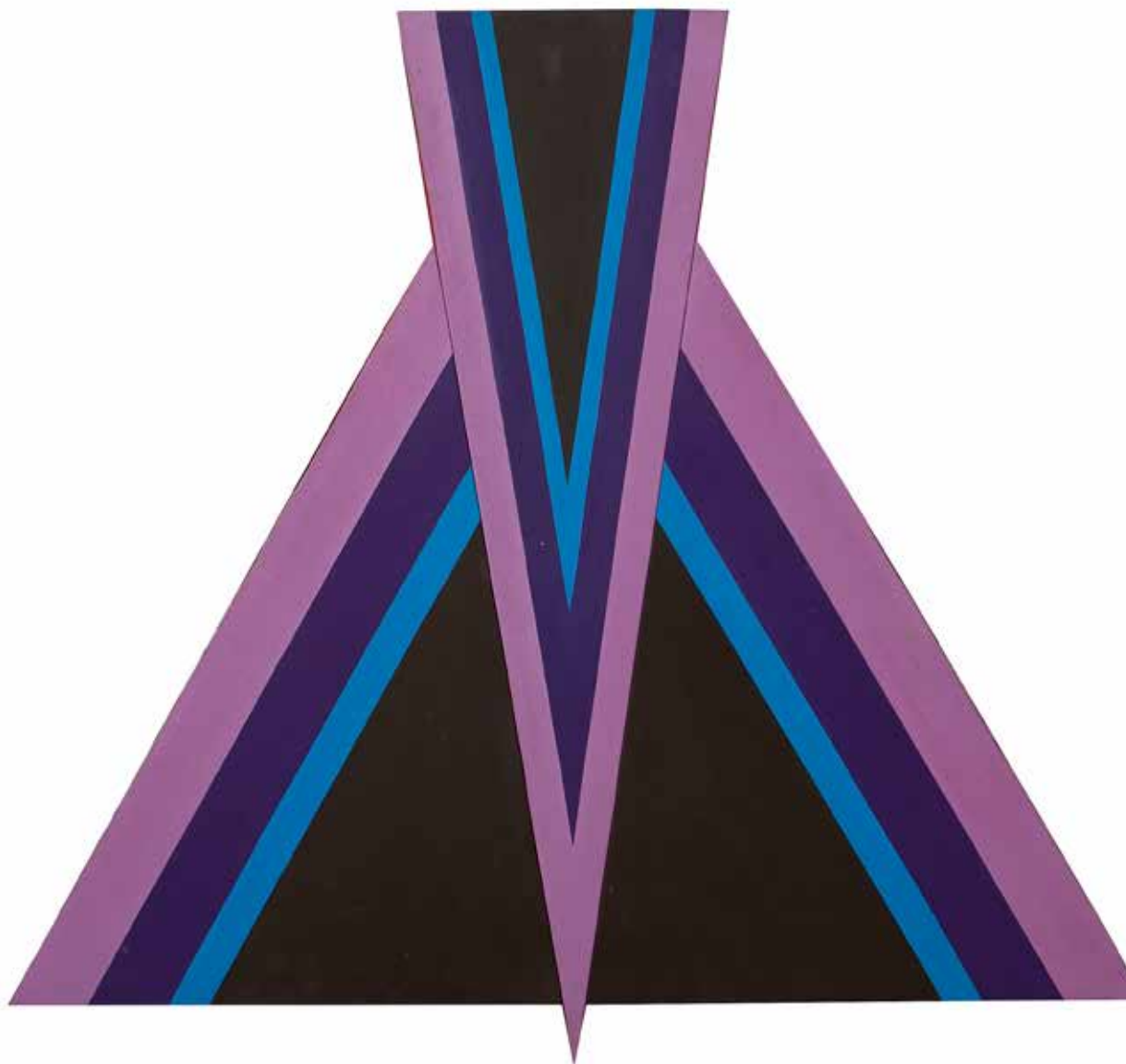
€150 - 250

434 LEO TOYE (B.1940)
Cattle in Flooded Fields
Watercolour, 21 x 34cm
Signed.
Together with another by the same artist (2)

€100 - 150

- 435 EVIN NOLAN (B. 1930)
'Comhchosach Scoilte'
Oil on canvas laid on board, irregular 122 x 122cm
Signed and dated (19)'72 verso, inscribed on label verso

€500 - 700





Lot 436

- 436 A LOUIS QUINZE STYLE GILDED AND EBONISED METAL CASED MANTLE CLOCK in the rococo taste.
47cm high

€100 - 200

- 437 AFTER BRAD BENNETT (20TH CENTURY)
O'Donoghue's Pub, Merrion Row
Colour print and miscellaneous pub paraphernalia etc.

€60 - 100

- 438 A JVC HIFI MUSIC SYSTEM, IN A GLASS FRONT CABINET and another (2)

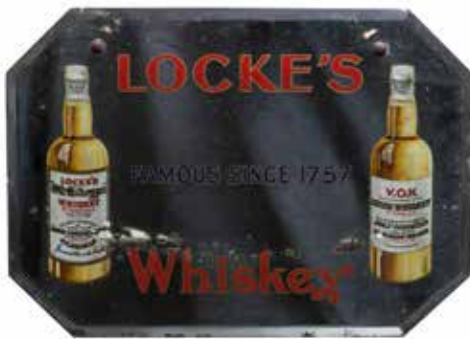
€40 - 60

- 439 MISCELLANEOUS ORNAMENTS including a model of an elephant, model cars etc.

€20 - 40

- 440 A VICTORIAN MAHOGANY FRAMED CRUTCH FRAMED TOILET MIRROR, the oval plate raised above a shaped platform base with two fitted compartments. 84cm high x 66cm

€100 - 200



Lot 437



Lot 437



Lot 439

441 A 19TH CENTURY MAHOGANY RECTANGULAR SIDETABLE,
the plain top above a frieze with central tablet decorated with neo-classical urns
and swags flanked by applied leaf sprays and fitted two side drawers, raised on
blind fret decorated chamfered legs
188 x 77 cm

€800 - 1,200

442 TWO ANTIQUE STYLE POLYCHROME TIMBER ARMORIAL SHIELDS (2)

€200 - 400



Lot 442

Lot 441



Lot 443

Lot 444



Lot 445



Lot 446

Lot 453

- 443 A 'MAXWIN BY PEARL' FIVE PIECE DRUM KIT;
together with a set of three cymbals on tripod stands, drum sticks etc.

€200 - 400

- 444 A PAIR OF UPHOLSTERED WING BACK SWIVEL ARMCHAIRS,
covered in brown velour on chrome stand

€80 - 120

- 445 A BLACK WROUGHT IRON PART-COMPANION STAND
and two wrought iron candle stands (3)

€60 - 80

- 446 A MODERN ORIENTAL TALL FOUR FOLD DRESSING SCREEN
decorated with birds and flowering trees on silvered ground. 183 x 40.5cm each
panel

€250 - 350

- 447 A MODERN BODHRÁN AND A SET OF BAGPIPES (2)

€100 - 150

- 448 A PAIR OF EDWARDIAN INLAID BEDROOM CHAIRS
and a folding games table (3)

€60 - 80



Lot 447

- 449 A STAINED WOOD FRAMED RECTANGULAR FRENCH BILLIARDS/PIN-BALL MACHINE BY E.J RILEY complete with score board and balls. 185 x 97cm

€300 - 500

- 450 A SILVERED METAL MODEL OF A STANDING STAG ON A VEINED GREEN MARBLE BASE. 34cm high overall; together with a silvered metal model of a pheasant (2)

€100 - 200

- 451 IRISH SCHOOL
Old Church Ruins in Landscape
Oil on canvas, 68 x 88cm

€50 - 100

- 452 MISCELLANEOUS PRINTS, SOUVENIR PAINTINGS ETC. (C.6)

€50 - 100

- 453 A CHINESE STYLE WOOL OVAL HEARTH RUG and another modern hearth rug

€10 - 20



Lot 449



Lot 450



Lot 452



Lot 451



- | | | | |
|-----|--|-----|---|
| 454 | <p>J. NEWHOUSE
Study of a Cathedral
Oil on canvas, 153 x 122cm
Signed verso</p> <p>€250 - 350</p> | 457 | <p>A VICTORIAN MAHOGANY FRAMED
UPHOLSTERED CHAISE LOUNGE
with single scrolled end, covered in buttoned green velvet
and raised on turned legs. 196cm long</p> <p>€400 - 800</p> |
| 455 | <p>MISCELLANEOUS BRASS AND COPPER
KETTLES
and sundry brass and copper saucepans etc.</p> <p>€100 - 150</p> | 458 | <p>AN INLAID MAHOGANY RECTANGULAR
TWO TIER COFFEE TABLE.
70 x 100cm</p> <p>€80 - 120</p> |
| 456 | <p>MISCELLANEOUS POTTERY CHARGERS,
JARDINIÈRES, ETC.</p> <p>€40 - 60</p> | 459 | <p>MISCELLANEOUS PRINTS AND
WATERCOLOURS ETC.</p> <p>€20 - 40</p> |

460

TAXIDERMY - A LARGE RECTANGULAR
TIMBER FRAMED DISPLAY CABINET
with a collection of twelve sea and other birds in a
naturalistic rock face setting. 141 x 58 x 147cm high

€1,000 - 2,000





Lot 461

- 461 AN EDWARDIAN STYLE INLAID MAHOGANY BOOKCASE
with moulded cornice above twin astragal glazed panel doors on a twin panel door cupboard base on bracket feet. 111cm wide, 220cm high, 51cm deep

€600 - 1,000

- 462 A COLLECTION OF MISCELLANEOUS PAPERBACK AND HARDBACK BOOKS, SUNDRY MAGAZINES ETC.

€50 - 100



Lot 463

- 463 A PAIR OF CHINESE STYLE FAUX IVORY VASES on timber bases. 32cm high

€100 - 200

- 464 AFTER PAUL HENRY RHA (1876 - 1958)
Errigal Mountain
Coloured print, 55 x 55cm
Together with a collection

€100 - 200

- 465 CONTINENTAL SCHOOL (MODERN)
Spanish Cottages by a River
Oil on canvas, 60 x 90 cm
Signed indistinctly

€400 - 500

- 466 AFTER F.G. NOBLE
Hunting Scene
Coloured print on canvas, 50 x 100cm

€40 - 50

- 467 A DOULTON LAMBETH GLAZED POTTERY
CIRCULAR JARDINERE
on matching stand with foliate decoration on sand
coloured ground. 73cm high, 26cm diameter

€200 - 400



Lot 467



Lot 646



Lot 465



Lot 466



Lot 470

- 468 A LATE 19TH CENTURY INLAID MAHOGANY SQUARE PIANO
by Broderip and Wilkinson, London, adapted as a desk/
dressing table, fitted single drawer and raised on reeded
tapering legs

€150 - 250

- 469 A 19TH CENTURY STYLE MAHOGANY RECTANGULAR MUSIC CANTERBURY,
fitted single frieze drawer on square supports and an
ebonised two tier occasional table (2)

€50 - 80

- 470 AN EDWARDIAN INLAID MAHOGANY RECTANGULAR BOWFRONT TWIN PEDESTAL
DESK,
with gilt tooled leather scriver above seven drawers and
raised on square tapering legs.
65 x 121cm

€600 - 800



Lot 471

- 471 A FRAMED LATE 19TH CENTURY STAINED
GLASS PANEL DEPICTING A LARGE GOBLET
AND SALVER.
46 x 60cm

€200 - 300

- 472 AN ART DECO STYLE BRASS MOUNTED MARBLE MANTLE CLOCK surmounted with a seated female figure, the case with applied brass scrollwork and raised on bracket feet. 59cm high

€500 - 700

- 473 AN ELECTRIFIED EASY ARMCHAIR with swivel mechanism and matching footstool covered in purple leather

€300 - 500

- 474 A LATE VICTORIAN STAINED WOOD RECTANGULAR DESK STAND with two inkwells; together with a reeded column table lamp

€80 - 100

- 475 A MISCELLANEOUS LOT comprising a pair of pottery vases, a brass jardinière, a floor standing ashtray, etc.

€40 - 60

- 476 A SMALL LEATHER TRAVEL CASE, an Osborne and Little wallpaper sample portfolio, a carved wood Don Quixote, etc.

€20 - 30



Lot 472



Lot 474



Lot 475



Lot 480



Lot 488

- 477 A STEEL FRAMED RECTANGULAR OFFICE TABLE
and steel four drawer filing cabinet (2)

€10 - 20

- 478 A CHINESE EMBOSSED WOOL RUG.
190 x 280cm

€80 - 120

- 479 A CIRCULAR COPPER LOG BUCKET
raised on three brass legs and paw feet.
47cm diameter

€150 - 250

- 480 A VICTORIAN BRASS SKELETON CLOCK
raised on red plush and ebonised timber base

€150 - 250

- 481 A LARGE STRIPPED PINE RECTANGULAR
KITCHEN TABLE
fitted with three frieze drawers and raised on platform
base.
183 x 74.5cm

€250 - 400

- 482 A VICTORIAN STRIPPED PINE RECTANGULAR
KITCHEN TABLE
raised on square supports and cross stretcher. 183 x 89cm;
together with a small oval pine table (2)

€100 - 200

- 483 TWO LARGE PAINTED TIMBER LUGGAGE
RACKS
with three tiers each.
c.196 x 90 x 183cm high

€20 - 40

- 484 A REEBOK EXERCISE STEP
and an exercise bench(2)

€20 - 40

- 485 A JOHNSON CYCLING MACHINE,
model JPC5100

€100 - 150

- 486 A POWERTEC WORKOUT BENCH
and a collection of weights

€100 - 150

- 487 A VULCAN SUPER PUNCH BALL,
a wall mounted exercise unit and a chrome framed rowing
machine etc.

€20 - 40

- 488 A LATE BELLEEK CHINA JUG
with applied polychrome flowers, a ceramic basket-work
Jardinière, a similar vase and a spelter figure

€40 - 50





Lot 492

- 489 A STAINED WOOD FRAMED ROCKING CHAIR
with loose cushion

€10 - 20

- 490 TWO SECTIONS OF MODULAR SEAT
FURNITURE
covered in buttoned black leatherette

€20 - 40

- 491 A LATE VICTORIAN INLAID WALNUT
UPRIGHT CASED PIANO,
retailed by Hilton & Hilton

€100 - 150



Lot 493

- 492 A PAIR OF SILVER PLATED FIVE LIGHT
CANDELABRA
with detachable sconces, raised on shaped square base

€100 - 150

- 493 A VICTORIAN BLACK SLATE CASED TEMPLE
MANTLE CLOCK

€40 - 60



Lot 491

- 494 A PERSIAN PATTERN WOOL RUG;
together with an another modern rug

€20 - 40

Lot 494

Lot 494

- 494A ITALIAN SCHOOL 19TH CENTURY
Madonna & Child
Oil on Canvas 100 x 81cm in a carved giltwood frame

€200 - 400

- 495 A COLLECTION OF MISCELLANEOUS PRINTS,
souvenir paintings, dartboard, mirror etc.

€20 - 40

- 496 A COLLECTION OF BOOKS, REFERENCE,
CHILDREN'S, SPORTS ETC.

€20 - 40



Lot 494A

- 497 A STAINED WOOD STICK STAND,
a pine chamber table and two children's chairs (4)

€40 - 80

- 498 A MIDDLE EASTERN PIERCED BRASS
COLUMN STANDARD LAMP
on circular spreading foot

€400 - 600

- 498A ANNE KING HARMAN (1919-1979)
A Rocky Shore, Connemara
Oil on board, 50 x 63cm
Signed

€300 - 400



Lot 498A

- 500 **A COLLECTION OF SIX SCOTCH WHISKIES**
comprising a bottle each of:
Glen Grant, 21 year old;
Glendullan single malt;
Glen Mor, 15 year old;
Clynelish, 12 year old;
Glenmorangie single malt, 10 year old;
Mortlach, 12 year old (6)

€150 - 250
- 501 **A COLLECTION OF SIX SCOTCH WHISKIES**
comprising a bottle each of:
Rosebank, 8 year old;
Knockando 1975 single malt;
The Macallan, 10 year old;
Lochnagar, 12 year old;
Glen Elgin, 12 year old;
Tomintoul Glenlivet, 8 year old (6)

€150 - 250
- 502 **A COLLECTION OF SIX SCOTCH WHISKIES**
comprising a bottle each of:
Longmorn Glenlivet, 12 year old;
Bunnahabhain, 12 year old;
Auchentoshan, 10 year old;
Bowmore, 12 year old;
Glenallachie Glenlivet, 12 year old;
Linkwood, 12 year old (6)

€150 - 250
- 503 **SIX BOTTLES FROM THE CONNOISSEURS
CHOICE OF SCOTCH SINGLE MALT WHISKEY**
comprising a bottle each of:
Portellen, 17 year old;
North Port, 17 year old;
Cragganmore, 15 year old;
Kinclaith, 16 year old;
Glen Keith, 20 year old;
Aberfeldy, 17 year old (6)

€150 - 250
- 504 **SIX BOTTLES FROM THE CONNOISSEURS
CHOICE OF SCOTCH SINGLE MALT WHISKEY**
comprising a bottle each of:
Macduff, 11 year old;
Mosstowie, 12 year old;
Caol Ila, 15 year old;
Teaninich, 15 year old;
Glenlochy, 13 year old;
Banff, 13 year old (6)

€150 - 250
- 505 **SIX BOTTLES FROM THE CONNOISSEURS
CHOICE OF SCOTCH SINGLE MALT WHISKEY**
comprising a bottle each of:
Lochside, 20 year old;
Caperdonich, 13 year old;
Imperial, 17 year old;
Knockdhu, 11 year old;
Glencadam, 12 year old;
Millburn, 20 year old (6)

€150 - 250
- 506 **A COLLECTION OF SIX SCOTCH WHISKIES**
comprising a bottle each of:
Glen Ranoch;
The Famous Grouse;
Whyte and Mackay;
The Glenlivet, 12 year old;
The Balvenie, 15 year old;
Lagavulin, 16 year old. (1 litre) (6)

€150 - 250
- 508 **SIX BOTTLES OF SINGLE OR PURE MALT
SCOTCH WHISKEY**
Bottled by W M Cadenhead of Aberdeen, comprising a
bottle each of:
Glentouchers;
Glen Rothes-Glenlivet;
Ardmore;
Aultmore;
Benromach;
Dallas Dhu. (6)

€150 - 250
- 509 **SIX BOTTLES OF SINGLE OR PURE MALT
SCOTCH WHISKEY**
Bottled by W M Cadenhead of Aberdeen,
Comprising a bottle each of:
Benriach-Glenlivet;
Balbair;
Coleburn;
Glen Albyn;
Dailuaine;
Glenlossie-Glenlivet (6)

€150 - 250
- 510 **A COLLECTION OF SIX SCOTCH WHISKIES**
comprising a bottle each of:
Dalwhinnie, 15 year old;
Laphroaig, 10 year old;
Glenmorangie, 10 year old;
Cardhu, 12 year old;
The Dalmore, 12 year old (1 litre);
Gold Glen (6)

€150 - 250
- 511 **SCOTCH WHISKIES**
comprising a bottle each of:
The Tormore, Glenlivet, 10 year old;
Cardhu, 12 year old;
Bladnoch, 8 year old;
Old Pulteney, 10 year old;
The Balvenie, 10 year old;
Oban, 12 year old (6)

€150 - 250
- 512 **A COLLECTION OF SIX SCOTCH WHISKIES**
comprising a bottle each of:
Glensk, 12 year old;
Strathisla, 25 year old;
Glenquoyn, 17 year old; Highland Park, 12 year old;
Old Fettercairn; Scapa, 8 year old (6)

€150 - 250



- 513 SIX BOTTLES FROM THE CONNOISSEURS CHOICE OF SCOTCH SINGLE MALT WHISKEY comprising a bottle each of:
Edradour, 14 year old;
Craigellachie, 16 year old;
Royal Brackla, 16 year old;
St Magdalene, 18 year old;
Benrinnes, 11 year old;
Convalmore, 13 year old
- €150 - 250
- 514 A SINGLE BOTTLE OF MIDLETON VERY RARE, 1984 (1)
- €150 - 250
- 515 A SINGLE BOTTLE OF MIDLETON VERY RARE, 1984 (1)
- €150 - 250
- 516 A COLLECTION OF SIX SCOTCH WHISKIES comprising a bottle each of:
Glenfarclas, 15 year old;
Cragganmore, 12 year old (1 litre);
The Dufftown Glenlivet, 10 year old;
Auchentoshan, 10 year old (1 litre);
The Real Mackenzie;
Blair Athol, 8 year old (6)
- €150 - 250
- 517 A COLLECTION OF SIX SCOTCH WHISKIES comprising a bottle each of:
Aberlour Glenlivet, 10 year (1 litre);
Glen Garloch, 10 year old;
Cragganmore, 12 year old;
The Glendronach, 12 year old;
Glenfiddich (1 litre);
Kilt Castle (6)
- €150 - 250
- 518 A COLLECTION OF SIX SCOTCH WHISKIES comprising a bottle each of:
Cardhu, 12 year old;
Royal Salute, 21 year old blended;
Inver House;
Talisker, 8 year old;
Chivas Regal;
Laphroaig, 10 year old (6)
- €150 - 250
- 519 A COLLECTION OF SIX SCOTCH WHISKIES comprising a bottle each of:
Glenmorangie, 10 year old;
Bowmore, 12 year old (1 litre);
Tomatin, 10 year old;
Lagavullin, 12 year old;
Springbank, 12 year old;
Ardbeg, 10 year old (6)
- €150 - 250
- 520 A COLLECTION OF SIX SCOTCH WHISKIES comprising a bottle each of:
The Singleton of Auchroisk (1975);
Glen Moray, 12 year old;
The Glenturret, 12 year old;
Inchgower, 16 year old;
Ord, 25 year old;
Glenugie, 20 year old (6)
- €150 - 250
- 521 A COLLECTION OF SIX SCOTCH WHISKIES comprising a bottle each of:
Speyburn-Glenlivet, 16 year old;
Inverleven, 21 year old;
Tullibardine 10 year old;
Bladnoch, 8 year old;
Isle of Jura, 10 year old;
Tamnavulin-Glenlivet, 10 year (6)
- €150 - 250
- 522 A COLLECTION OF SIX SCOTCH WHISKIES comprising a bottle each of:
Bruichladdich (no label);
Tamdhu (no label), 10 year old;
Connoisseurs Choice 14 year old (partial label);
Glenury Royal, 13 year old;
Connoisseurs Choice Single Malt x2 (no labels) (6)
- €150 - 250
- 523 A COLLECTION OF FOUR SCOTCH WHISKIES comprising a bottle each of:
Littlemill, 17 year old;
Stewarts Cream of the Barley;
Black and White;
VG Kinsey Blend (4)
- €80 - 120
- 524 A COLLECTION OF IRISH WHISKIES comprising of:
John Jameson Very Special, 15 year old x2;
Jameson Redbreast, 12 year old;
Black Bush, (1.5 litre)
(4)
- €80 - 100
- 525 A COLLECTION OF MINIATURES (5CL) incl. nine Glenfiddich;
one each Laphroaig & Whyte & Mackay (11)
- €50 - 70
- 526 A COLLECTION OF CANADIAN WHISKEY; BOURBON; BAILEY'S IRISH CREAM; SHERRIES ETC.
- €50 - 70
- 527 A COLLECTION OF GIN AND VODKA, MARTINI ETC.
- €40 - 60

- 530 A SMALL ORNAMENTAL CANNON ON
TIMBER TROLLEY ETC.

€30 - 40



Lot 530

- 531 P. CHAMPION

Lancaster over Lincoln
Oil on board, 51 x 76cm

Signed;

Together with another depicting a Lancaster on a bombing
raid, by the same hand (2)

€80 - 120

- 532 P. CHAMPION

1st World War ariel dog fight

Oil on board, 40 x 76cm

Signed;

Together with another similar example by the same hand
(2)

€50 - 60



Lot 531

- 533 P. CHAMPION

A pleasure cruiser off the Riviera

Oil on canvas, 70 x 90cm

Signed;

Together with a photograph of a racing boat (2)

€50 - 60



Lot 533



Lot 532



540 A PAIR OF GEORGIAN STYLE DECORATIVE
IRON CANNONS,
cast in stages and mounted on timber carriages,
barrel 130cm high; carriage 72cm tall

€1,000 - 2,000



541 A PAIR OF VICTORIAN CAST IRON BOOT
SCRAPERS
in the form of pairs of opposing scroll legs with paw feet.
37 x 27cm

€400 - 600

- 542 A PAIR OF CAST IRON GARDEN URNS
of floral form, with panelled body, on circular foot and
square base. 59cm diameter, 41cm tall

€1,500 - 2,500

- 543 A 19TH CENTURY CAST IRON TWO HANDED
GARDEN URN,
with floral rim and body with cast scrolling foliage in low
relief, the twin handles with human masked terminated on
a fluted spreading foot with square base. 75cm tall

€1,500 - 2,000

- 544 A CAST STONE AMORINI
with horn of plenty.
73cm tall

€300 - 400





- 545 A PAIR OF 19TH CENTURY CAST IRON GARDEN URNS,
floral compressed form fluted body on spreading feet and square base. 75cm diameter, 50cm tall

€1,000 - 1,500



- 546 A PAIR OF VICTORIAN CAST IRON GARDEN URNS,
floral neck, fluted body on square tapering pedestals, with vines in low relief. 53cm diameter, 80cm tall

€1,500 - 2,000

- 547 FOUR STONE STATUES
depicting the Four Graces, in classical diaphaneous robes. (4)

€1,000 - 2,000







551 A PAIR OF GEORGIAN STYLE
DECORATIVE IRON CANNONS,
cast in stages and mounted on timber carriages
barrel 130cm long; carriage 72cm tall

€1,500 - 2,000



552 A SET OF VICTORIAN STYLE LIGHT
CAST IRON GARDEN FURNITURE
comprising a circular table and a set of four
matching chairs, white painted

€200 - 300

552'A A SET OF VICTORIAN STYLE LIGHT
CAST IRON GARDEN FURNITURE
comprising a circular table and a set of four
matching chairs, white painted

€200 - 300

553

A GEORGE III IRON SHIPS 2LB CANNON,
BELIEVED TO BE FROM H.M.S. ARCADIA

Provenance: Rev Charles Travers, Virginia, Cavan;
Aidan Kelly, Wexford; Pat Collier, Castleknock Dublin.

H.M.S arcadia arrived in Wexford town in 1749 to take
on troops and prisoners. The Cannons were offloaded.
The cannon is accompanied by a printed history and
provenance. 103cm long

€2,000 - 3,000





554 TWO CAST IRON TABLES
with circular marble tops.

€200 - 300



555 A CANNON,
single version of the pair.

€500 - 800

557

A BRITISH PUBLIC TELEPHONE BOX
with glazed panels and Royal Cypher, painted red.

€1,000 - 1,500





- 558 THE ENTIRE CONTENTS OF 'THE WHEEL HOUSE'
including a Victorian gilded over mantle mirror, tables, chairs, dressing tables, ornaments, etc.

€300 - 400

- 559 A 'BREEN OF ENNISCORTHY' DARK GREEN PAINTED TIMBER AND METAL FRAMED JAUNTING CAR
with four passenger seats

€500 - 800



- 560 A SET OF VICTORIAN STYLE LIGHT CAST IRON GARDEN FURNITURE comprising a circular table and a set of four matching chairs, white painted

€200 - 300

- 561 A PAIR OF CIRCULAR GRANITE TALL STADDLE STONES, IN TWO PIECES
76cm high, disc 46cm diameter

€600 - 1,000

Staddle stones were originally used as supporting bases for granaries, game larders, etc. The staddle stones lifted the granaries above the ground thereby protecting the stored grain from vermin and water seepage.

- 562 A PAIR OF CIRCULAR GRANITE TALL STADDLE STONES, IN TWO PIECES
76cm high, disc 46cm diameter

€600 - 1,000



Lot 560



Lot 562



Lot 561



- 563 A PAIR OF CIRCULAR GRANITE TALL STADDLE STONE, IN TWO PIECES
76cm high, disc 46cm diameter

€600 - 1,000

- 564 A PAIR OF CIRCULAR GRANITE TALL STADDLE STONES, IN TWO PIECES
76cm high, disc 46cm diameter

€600 - 1,000

- 565 A SET OF FOUR WHITE PAINTED CAST CEMENT PLINTHS,
with scroll decoration, 43cm high and a single cast iron planter

€100 - 200

- 565A A PAIR OF CIRCULAR GRANITE STADDLE STONES, IN TWO PIECES,
pedestal 76cm high, disc 46cm diameter

€600 - 1,000

- 566 A SET OF THREE IRON FRAMED WHITE TIMBER SLAT GARDEN BENCHES.
178cm long

€250 - 350



Lot 567

- 567 A SET OF THREE COALBROOKDALE STYLE PAINTED CAST IRON GARDEN SEATS,
with fern pattern backs and having timber slat seats.
152cm long, cast with number 'B165' on the back

€1,000 - 2,000

- 568 FOUR LARGE GLAZED TERRACOTTA CIRCULAR JARDINIERS,
c.63cm diameter, with stencilled decoration, together with
another (5)

€200 - 300



Lot 566



Lot 569

- 569 VINCENT SHERIDAN (B.1945)
Rooks on Road
Acrylic on board, 32 x 48cm
Signed

Provenance: Kilcock Art Gallery

€100 - 150

- 570 A COLLECTION OF MISCELLANEOUS PRINTS,
including a large framed oilgraph depicting Charles I
saying goodbye to his children etc.

€40 - 60



Lot 571

- 571 PAULINE WRIXON
"In and Out of..."
Watercolour, 56cm x 51cm
Signed;
Together with a large print of a Japanese woman in red
robe (2)

€40 - 60

- 572 A PAIR OF MODERN WROUGHT IRON
CANDLESTICKS,
raised on tripod supports

€10 - 20

- 573 A WHITE GLAZED POTTERY ABSTRACT
PIECE,
raised on a black painted base. 28cm high; together with
another similar piece on a black pedestal. 55cm high
overall (2)

€20 - 40

- 574 A VERY LARGE CIRCULAR LOG BASKET.
104cm diameter, 88cm high, together with another (2)

€20 - 40

- 575 A BOX CONTAINING VARIOUS FRAMED
PRINTS, MOUNTED PRINTS ETC.

€20 - 40

- 576 A MISCELLANEOUS COLLECTION OF BOOKS

€20 - 40

- 577 A MISCELLANEOUS COLLECTION OF BOOKS

€20 - 40

- 578 A MISCELLANEOUS COLLECTION OF BOOKS

€20 - 40



Lot 572



Lot 573

- 583 ARTHUR H. TWELLS (1921-1996)
Doe and Fawn in Landscape
Oil on board, 39cm x 79cm
Signed;
Together with an unframed abstract; and another work of a
race track by Carmel Brennan (20th/ 21st Century) (3)
- €20 - 40
- 584 A GLASS CIRCULAR COFFEE TABLE,
miscellaneous chairs, standard lamp, and two tier office
tables etc.
- €10 - 20
- 585 AN ARCHITECT'S MODEL OF A PROPOSED
DEVELOPMENT
at Courtown Demesne, under Perspex, on table stand
- €20 - 40
- 586 JONATHAN WADE (1941-1973)
Urban abstract
Oil on canvas, 63cm x 75cm
Signed
- €500 - 700
- 579 A YELLOW PIPED NAVY BLUE FOOTMAN'S
JACKET
- €10 - 20
- 580 A PINK GEOMETRIC PATTERN RUG;
together with other modern rugs (3)
- €40 - 50
- 581 MICHAEL ASHUR (B. 1950)
Celestial Star
Mixed media, 76 x 101cm
Signed and dated (19)'73
- €300 - 400
- 582 COLGAN
Wooded River landscape
Oil on board, 58cm x 99cm
Signed;
Together with another similar example by the same hand
- €20 - 40



Lot 579

- 591 **DALLAS SIMPSON (1925-1984)**
Homeward bound
Oil on board, 44cm x 90cm
Signed;
Together with another

€60 - 80
- 592 **MODERN SCHOOL**
Spiked ball suspended
Bronze, 57cm high on a sandstone base

€80 - 120
- 593 **DIAZ**
Spanish street scenes
A pair, oil on canvas, 91cm x 65cm
Signed;
Together with a pair of continental street scenes, oil on canvas (4)

€50 - 100
- 594 **A PRINTED WALL PANEL**
Also Rug with deer in a forest, together with another similar example (2)

€10 - 20
- 587 **FIVE METAL FOUR DOOR FILING CABINETS,**
and smaller metal filing cabinets etc.

€40 - 60
- 588 **A MIXED SUITE OF METAL FRAMED OFFICE**
DESKS,
storage units and shelving etc.

€100 - 200
- 589 **W. H. BURNS (1924-1995)**
Winter landscape
Oil on board, 37cm x 75cm
Signed

€100 - 150
- 590 **ANNE S. KING-HARMAN (1919-1979)**
Lough Key
Oil on board, 40cm x 50cm
Signed

€200 - 400
- 590 **A CAST METAL CIRCULAR FOUNTAIN,**
depicting two children standing under an umbrella with circular well base

€800 - 1000



Lot 590

- | | | | |
|-----|--|-----|---|
| 593 | A BRONZE SUNDIAL,
with moulded relief decoration, on a fluted metal column. | 600 | WILLIAM BETTS
Bunratty Castle, Co Clare
Oil on board, 34cm x 75cm
Signed;
Together with an Italian harvesting scene, oil on canvas (2) |
| | €100 - 200 | | €200 - 300 |
| 594 | A COLLECTION OF WROUGHT IRON CART
WHEELS | | |
| | €50 - 100 | | |
| 595 | A SINGLE PEDESTAL DESK,
an open bookshelf and miscellaneous office chairs and
tables | 601 | A METAL TWO DOOR FULL HEIGHT
CABINET,
a Bisley filing cabinet, two office desks, occasional tables
and office chairs etc. |
| | €10 - 20 | | €20 - 40 |
| 596 | A COLLECTION OF SILVERED METAL
FIGHTING COCKS,
dogs and various ornaments, coffee pots, etc. | 602 | FOUR VARIOUS OFFICE DESKS,
office chairs, metal filing cabinet |
| | €30 - 50 | | €20 - 40 |
| 597 | A COLLECTION OF SUNDRY LEGAL BOOKS,
including the Encyclopaedia of Forms and Precedents,
fourth edition etc. | 603 | AN ARRANGEMENT OF STAINED WOOD AND
VENEERED OPEN BOOKSHELVES |
| | €100 - 200 | | €10 - 20 |
| 598 | JONATHAN WADE (1941-1973)
Staircase
Oil on canvas, 68cm x 68cm
Signed | 604 | A LARGE COLLECTION OF GYM EQUIPMENT
including Lifecycle 7500; Interactive ST2000; Reebok fitness
steps; Landice L8; six 'Total gym' weight machines |
| | €400 - 500 | | €200 - 400 |
| 599 | JONATHAN WADE (1941-1973)
Abstract
Oil on canvas, 83cm x 57cm
Signed;
Together with another smaller example by the same hand | 605 | ITALIAN SCHOOL (19TH CENTURY)
Classical river landscape with figure and buildings |
| | €300 - 400 | | €200 - 400 |

Lot 593



- 606 **A COLLECTION OF OLD BICYCLES:**
A Raleigh 'Chopper' Bicycle; a ladies 'President' bicycle, a ladies 'President' racing bicycle, a Carlton gents 'Criterium' racing bicycle and an assortment of children's bicycles etc.
€100 - 200
- 607 **A WOOD BROS BLACK AND WHITE GOLF BAG**
and a set of Wood Bros Golf Clubs, comprising three drivers and eight irons No.3-9; and a pitching wedge (12)
€100 - 200
- 608 **A SPALDING RED AND CREAM GOLD BAG**
and a set of Spalding Golf Clubs, comprising four drivers and seven irons No-5-9 and a pitching and a sand wedge (12)
€100 - 200
- 609 **TWO MEN'S GOLF BAGS**
and an assortment of Golf Clubs, irons, drivers including Callaway 'The Biggest Big Bertha' etc.
€100 - 200
- 610 **A LARGE COLLECTION OF LEATHER TACK,**
comprising:
various bridles, one fitted with blinkers and brass brow-band;
various running martingales;
leather stirrup leathers;
rubber reins;
leather side reins;
girths, etc.
€200 - 400
- 611 **A COLLECTION OF HORSE BITS,**
comprising:
-three Portsmouth Pelhams;
2 loose ring bradoon snaffles;
three egg butt snaffles;
a jointed Cheltenham gag eggbutt snaffle;
a three ring gag;
a French link snaffle;
a full cheek happy mouth bit
€200 - 400
- 612 **A COLLECTION OF VARIOUS LEATHER SADDLES**
€300 - 500



- | | | | |
|-----|---|-----|---|
| 613 | VINCENT SHERIDAN
Coastal Landscape
Oil on board, 34 x 51cm

€100 – 200 | 618 | IRISH SCHOOL
Irises and Dragon Flies
Oil on canvas, 90 x 60cm

€200 – 300 |
| 614 | KEVIN SIMMS (20TH CENTURY)
Stairs at the Back of a House
Oil on canvas, 60 x 50cm

€100 – 200 | 619 | WILLIAM BETTS
Moonlit Coastal Landscape
Oil on canvas, 36 x 75cm

€50 – 100 |
| 615 | PAUL BRITTON
Pomona
Mixed media

€ 20 - 50 | 620 | A VICTORIAN MAHOGANY SCOTTS CHEST
OF DRAWERS,
with turned wooden handles.

€200 – 400 |
| 616 | GWEN FORD
A View of Baltimore
Oil on board, 30 x 25cm

€50 – 100 | 621 | A MAHOGANY WARDROBE AND DRESSING
TABLE etc.

€50 – 100 |
| 617 | A SMALL OCTAGONAL BRASS FRAMED
CEILING LIGHT

€100 – 150 | | |



General Terms and Conditions of Business

The Auctioneer carries on business on the following terms and conditions and on such other terms or conditions as may be expressly agreed with the Auctioneer or set out in any relevant Catalogue. Conditions 12-21 relate mainly to buyers and conditions 22-32 relate mainly to sellers. Words and phrases with special meanings are defined in condition 1. Buyers and sellers are requested to read carefully the Cataloguing Practice and Catalogue Explanation contained in condition 2.

DEFINITIONS AND GENERAL CONDITIONS

Definitions

1. In these conditions the following words and expressions shall have the following meanings:

'Auctioneer' – James Adam & Sons.

'Auctioneer's Commission' – The commission payable to the Auctioneer by the buyer and seller as specified in conditions 13 and 25.

'Catalogue' – Any advertisement, brochure, estimate, price list or other publication.

'Forgery' – A Lot which was made with the intention of deceiving with regard to authorship, culture, source, origin, date, age or period and which is not shown to be such in the description therefore in the Catalogue and the market value for which at the date of the auction was substantially less than it would have been had the Lot been in accordance with the Catalogue description.

'Hammer Price' – The price at which a Lot is knocked down by the Auctioneer to the buyer.

'Lot' – Any item which is deposited with the Auctioneer with a view to its sale at auction and, in particular, the item or items described against any Lot number in any Catalogue.

'Proceeds of Sale' – The net amount due to the seller being the Hammer Price of the Lot after deducting the Auctioneer's Commission thereon under condition 25 the seller's contribution towards insurance under condition 26, such VAT as is chargeable and any other amounts due by the seller to the Auctioneer in whatever capacity howsoever arising.

'Registration Form or Register' – The registration form (or, in the case of persons who have previously attended at auctions held by the Auctioneer and completed registration forms, the register maintained by the Auctioneer which is compiled from such registration forms) to be completed and signed by each prospective buyer or, where the Auctioneer has acknowledged pursuant to condition 12 that a bidder is acting as agent on behalf of a named principal, each such bidder prior to the commencement of an auction.

'Sale Order Form' – The sale order form to be completed and signed by each seller prior to the commencement of an auction.

'Total Amount Due' – The Hammer Price of the Lot sold, the Auctioneer's Commission due thereon under condition 13, such VAT as is chargeable and any additional interest, expenses or charges due hereunder.

'V.A.T.' – Value Added Tax.

Cataloguing Practice and Catalogue Explanations

2. Terms used in Catalogues have the following meanings and the Cataloguing Practice is as follows:

The first name or names and surname of the artist;
In the opinion of the Auctioneer a work by the artist.

The initials of the first name(s) and the surname of the artist;
In the opinion of the Auctioneer a work of the period of the artist and which may be in whole or in part the work of the artist.

The surname only of the artist;
In the opinion of the Auctioneer a work of the school or by one of the followers of the artist or in his style.

The surname of the artist preceded by 'after';
In the opinion of the Auctioneer a copy of the work of the artist.

'Signed'/'Dated'/'Inscribed';
In the opinion of the Auctioneer the work has been signed/dated/inscribed by the artist.

'With Signature'/'with date'/'with inscription';
In the opinion of the Auctioneer the work has been signed/dated/inscribed by a person other than the artist.

'Attributed to';
In the opinion of the Auctioneer probably a work of the artist.

'Studio of'/'Workshop of'
In the opinion of the Auctioneer a work executed in the studio of the artist and possibly under his supervision.

'Circle of';
In the opinion of the Auctioneer a work of the period of the artist and showing his influence.

'Follower of';
In the opinion of the Auctioneer a work executed in the artist's style yet not necessarily by a pupil.

'Manner of';

In the opinion of the Auctioneer a work executed in artist's style but of a later date.

'*';

None of the terms above are appropriate but in the Auctioneer's opinion the work is a work by the artist named.

GENERAL CONDITIONS

Auctioneer Acting as Agent

3. The Auctioneer is selling as agent for the seller unless it is specifically stated to the contrary. The Auctioneer as agent for the seller is not responsible for any default by the seller or the buyer.

Auctioneer Bidding on behalf of Buyer

4. It is suggested that the interests of prospective buyers are best protected and served by the buyers attending at an auction. However, the Auctioneer will, if instructed, execute bids on behalf of a prospective buyer. Neither the Auctioneer nor its employees, servants or agents shall be responsible for any neglect or default in executing bids or failing to execute bids.

Admission to Auctions

5. The Auctioneer shall have the right exercisable in its absolute discretion to refuse admission to its premises or attendance at its auctions by any person.

Acceptance of Bids

6. The Auctioneer shall have the right exercisable in its absolute discretion to refuse any bids, advance the bidding in any manner it may decide, withdraw or divide any Lot, combine any two or more Lots and, in the case of a dispute, to put any Lot up for auction again.

Indemnities

7. Any indemnity given under these conditions shall extend to all actions, proceedings, claims, demands, costs and expenses whatever and howsoever incurred or suffered by the person entitled to the benefit of the indemnity and the Auctioneer declares itself to be a trustee of the benefit of every such indemnity for its employees, servants or agents to the extent that such indemnity is expressed to be for their benefit.

Representations in Catalogues

8. Representations or statements made by the Auctioneer in any Catalogue as to contribution, authorship, genuineness, source, origin, date, age, provenance, condition or estimated selling price or value is a statement of opinion only. Neither the Auctioneer nor its employees, servants or agents shall be responsible for the accuracy of any such opinions. Every person interested in a Lot must exercise and rely on their own judgment and opinion as to such matters.

9. The headings of the conditions herein contained are inserted for convenience of reference only and are not intended to be part of, or to effect, the meaning or interpretation thereof.

Governing Law

10. These conditions shall be governed by and construed in accordance with Irish Law.

Notices

11. Any notice or other communication required to be given by the Auctioneer hereunder to a buyer or a seller shall, where required, be in writing and shall be sufficiently given if delivered by hand or sent by post to, in the case of the buyer, the address of the buyer specified in the Registration Form or Register, and in the case of the seller, the address of the seller specified in the Sale Order Form or to such other address as the buyer or seller (as appropriate) may notify the Auctioneer in writing. Every notice or communication given in accordance with this condition shall be deemed to have been received if delivered by hand on the day and time of delivery and if delivered by post three (3) business days after posting.

The Buyer

12. The buyer shall be the highest bidder acceptable to the Auctioneer who buys at the Hammer Price. Any dispute which may arise with regard to bidding or the acceptance of bids shall be settled by the Auctioneer. Every bidder shall be deemed to act as principal unless the Auctioneer has prior to the auction, acknowledged in writing that a bidder is acting as agent on behalf of a named principal.

Commission

13. The buyer shall pay the Auctioneer a commission at the rate of 20%, **exclusive** of V.A.T.

Payment

14. Unless credit terms have been agreed with the Auctioneer before the auction the buyer of a Lot shall pay to the Auctioneer within one (1) day from the date of the auction the Total Amount Due. Notwithstanding this, the Auctioneer may, in its sole discretion, require a buyer to pay a deposit of 25% of the Total Amount Due at the conclusion of the auction.

The Auctioneer may apply any payments received by a buyer towards any sums owing from that buyer to the Auctioneer on any account whatever regardless of any directions of the buyer or his agent in that regard whether express or implied.

The Auctioneer shall only accept payment from successful bidders in cash or by the bidder's own cheque. Cheques drawn by third parties, whether in the Auctioneer's favour or requiring endorsement, shall not be accepted.

Reservation of Title buyer until he has paid to the Auctioneer the Total Amount Due.

15. Notwithstanding delivery or passing of risk to the buyer the ownership of a Lot shall not pass to the buyer until he has paid to the Auctioneer the Total Amount Due.

Collection of Purchases

16. The buyer shall at his own expense collect the Lot purchased not later than seven (7) days after the date of the auction but (unless credit terms have been agreed with the Auctioneer pursuant to condition 14) not before payment to the Auctioneer of the Total Amount Due.

The buyer shall be responsible for any removal, storage and insurance charges in respect of any Lot which is not taken away within seven (7) days after the date of the auction.

The purchased Lot shall be at the buyer's risk in all respects from the earlier of the time of collection or the expiry of one (1) day from the date of the auction. Neither the Auctioneer nor its employees, servants or agents shall thereafter be liable for any loss or damage of any kind howsoever caused while a purchased Lot remains in its custody or control after such time.

Packaging and Handling of Purchased Lots

17. Purchased Lots may be packed and handled by the Auctioneer, its employees, servants or agents. Where this is done it is undertaken solely as a courtesy to buyers and at the discretion of the Auctioneer. Under no circumstances shall the Auctioneer, its employees, servants or agents be liable for damage of any kind and howsoever caused to glass or frames nor shall the Auctioneer be liable for the errors or omissions of, or for any damage caused by, any packers or shippers which the Auctioneer has recommended.

Non-Payment or Failure to Collect Purchased Lots

18. If a buyer fails to pay for and/or collect any purchased Lot by the dates herein specified for payment and collection the Auctioneer shall, in its absolute discretion and without prejudice to any other rights or remedies it may have, be entitled to exercise one or more of the following rights or remedies without further notice to the buyer:

- (a) To issue court proceedings for damages for breach of contract;
- (b) To rescind the sale of that Lot or any other Lots sold to the buyer whether at that or at any other auction;
- (c) To resell the Lot or cause it to be resold whether by public auction or private sale. In the event that there is a deficiency between the Total Amount Due by the buyer and the amount received by the Auctioneer on such resale after deduction of any necessary expenses the difference shall be paid to the Auctioneer by the buyer. Any surplus arising shall belong to the seller.
- (d) To store (whether at the Auctioneer's premises or elsewhere) and insure the purchased Lot at the expense of the buyer.
- (e) To charge interest on the Total Amount Due at the rate of 2% over and above the base rate from time to time of Bank of Ireland or if there be no such rate, the nearest equivalent thereto as determined by the Auctioneer in its absolute discretion from the date on which payment is due hereunder to the date of actual payment.
- (f) To retain that Lot or any other Lot purchased by the buyer whether at the same or any other auction and release same to the buyer only after payment to the Auctioneer of the Total Amount Due.
- (g) To apply any sums which the Auctioneer received in respect of Lots being sold by the buyer towards settlement of the Total Amount Due.
- (h) To exercise a lien on any property of the buyer in the possession of the Auctioneer or whatever reason.

Liability of Auctioneer and Seller

19. Prior to auction ample opportunity is given for the inspection of the Lots on sale and each buyer by making a bid acknowledges that he has, by exercising and relying on his own judgment, satisfied himself as to the physical condition, age and Catalogue description of each Lot (including but not restricted to whether the Lot is damaged or has been repaired or restored). All Lots are sold with all faults and imperfections and errors of description. None of the seller, the Auctioneer nor any of their employees, servants or agents shall be responsible for any error of description or for the condition or authenticity of any Lot. No warranty whatsoever is given by the seller or Auctioneer or by any of their employees, servants or agents in respect of any Lot and any condition or warranty express or implied by statute or otherwise is hereby specifically excluded.

Forgeries

20. Any amount paid by a buyer in respect of a Lot which, if it is proved within three (3) years of the date of the auction at which it was purchased, to have been a Forgery shall be refunded to the seller subject to the provisions hereof, provided that:

- (a) The Lot has been returned by the buyer to the Auctioneer within three (3) years of the date of the auction in the same condition in which it was at the time of the auction together with evidence proving that it is a Forgery, the number of the Lot and the date of the auction at which it was purchased;
- (b) The Auctioneer is satisfied that the Lot is a Forgery and that the buyer has and is able to transfer good and marketable title to the Lot free from any third party claims;

FURTHER PROVIDED THAT the buyer shall have no rights hereunder if:

- (i) The description of the Lot in the Catalogue at the time of the auction was in accordance with the then generally accepted opinion of scholars or experts or fairly indicated that there was a conflict of such opinion;
- (ii) The only method of establishing at the time of the auction in question that the Lot was a Forgery would have been by means of scientific processes which were not generally accepted for use until after the date of the auction or which were unreasonably expensive or impractical.

The buyer's sole entitlement under this condition is to a refund of the actual amount paid by him in respect of the Lot. Under no circumstances shall the Auctioneer be liable for any damage, loss (including consequential, indirect or economic loss) or expense suffered or incurred by the buyer by reason of the Lot being a Forgery.

The benefit of this condition shall be solely and exclusively for the buyer and shall not be assignable. The buyer shall for the purpose of this condition be the person to whom the original invoice in respect of the sale of the Lot is made.

Photographs

21. The buyer authorises the Auctioneer at any time to make use of any photographs or illustrations of the Lot purchased by the buyer for such purposes as the Auctioneer may require.

CONDITIONS WHICH MAINLY CONCERN THE SELLER**Auctioneer's Discretion**

22. With regard to the sale of any Lot the Auctioneer shall have the following powers exercisable solely in the discretion of the Auctioneer:

- (i) To decide whether to offer any Lot for sale or not;
- (ii) To decide whether a particular Lot is suitable for sale by the Auctioneer and, if so, to determine which auction, the place and date of sale, the conditions of sale and the manner in which such sale should be conducted;
- (iii) To determine the description of any Lot in a Catalogue.
- (iv) To decide whether the views of any expert shall be obtained and to submit Lots for examination by any such experts.
- (v) To determine what illustration of a Lot (if any) is to be included in the Catalogue.

Seller's Warranty and Indemnity

23. The seller warrants to the Auctioneer and to the buyer that he is the true owner of the Lot or is legally authorised to sell the Lot on behalf of the true owner and can transfer good and marketable title to the Lot free from any third party claims. As regards Lots not held by the Auctioneer on its premises or under its control the seller warrants and undertakes to the Auctioneer and the buyer that the Lot will be available and in a deliverable state on demand by the Auctioneer or buyer. The seller shall indemnify the Auctioneer and the buyer or any of their respective employees, servants or agents against any loss or damage suffered by any of them in consequence of any breach of the above warranties or undertakings by the seller.

Reserves

24. Subject to the Auctioneer's discretion, the seller shall be entitled prior to the auction to place a reserve on any Lot. All reserves must be agreed in advance by the Auctioneer and entered on the Sale Order Form or subsequently be confirmed in writing to the Auctioneer prior to auction. This also applies to changes in reserves. A reserve may not be placed upon any Lots under €500 in value. The reserve shall be the minimum Hammer Price at which the Lot may be sold by the Auctioneer. A reserve once in place may only be changed with the consent of the Auctioneer. A commission shall be charged on the 'knock-down' bid for Lots which fail to reach the reserve price. Such commission shall be 5% of the 'knock-down' bid. This commission and any VAT payable thereon must be paid before removal of the Lot after the auction. The minimum commission hereunder shall be €25. The Auctioneer may in its sole discretion sell a Lot at a Hammer Price below the reserve therefore but in such case the Proceeds

of Sale to which the seller shall be entitled shall be the same as they would have been had the sale been at the reverse.

Unless a reserve has been placed on a Lot in accordance with the provisions set out above such Lot shall be put up for sale without reserve.

In the event that any reserve price is not reached at auction then for so long as the Lot remains with the Auctioneer and to the extent that the Lot has not been re-entered in another auction pursuant to condition 31 the seller authorises the Auctioneer to sell the Lot by private treaty at not less than the reserve price. The Auctioneer shall ensure that in such a case those conditions herein which concern mainly the buyer shall, with any necessary modification, apply to such sale.

Commission

25. The seller shall pay the Auctioneer commission at the rate of 10% on the Hammer Price of all Lots sold on behalf of the seller at Attic Sales and 17.5% on the Hammer Price of all Lots sold on behalf of the seller at Fine Art, Wine and Militaria Sales together with V.A.T. thereon at the applicable rate. The seller authorises the Auctioneer to deduct from the Hammer Price paid by the buyer the Auctioneer's Commission under this condition; VAT payable at the applicable rates and any other amounts due by the seller to the Auctioneer in whatever capacity howsoever arising. The seller agrees that the Auctioneer may also receive commission from the buyer pursuant to condition 13.

Insurance

26. Unless otherwise instructed by the seller, all Lots (with the exception of motor vehicles) deposited with the Auctioneer or put under its control for sale shall automatically be insured by the Auctioneer under the Auctioneer's own fine arts policy for such sum as the Auctioneer shall from time to time in its absolute discretion determine. The seller shall pay the Auctioneer a contribution towards such insurance by the Auctioneer, be sold for such amount. Such insurance shall subsist until such time as the Lot is paid for and collected by the buyer or, in the case of Lots sold which are not paid for or collected by the buyer by the due date hereunder for payment or collection such due date or, in the case of Lots which are not sold, on the expiry of seven (7) days from the date on which the Auctioneer has notified the seller to collect the Lots.

Rescission of Sale

27. If before the Auctioneer has paid the Proceeds of Sale to the seller the buyer proves to the satisfaction of the Auctioneer that the Lot sold is a Forgery and the requirements of condition 20 are satisfied the Auctioneer shall rescind the sale and refund to the buyer any amount paid to the Auctioneer by the buyer in respect of the Lot.

Payment of Proceeds of Sale

28. The Auctioneer shall remit the Proceeds of Sale to the seller not later than thirty (30) days after the date of the auction, provided however that, if by that date, the Auctioneer has not received the Total Amount Due from the buyer then the Auctioneer shall remit the Proceeds of Sale within seven (7) working days after the date on which the Total Amount Due is received from the buyer. If credit terms have been agreed between the Auctioneer and the buyer the Auctioneer shall remit to the seller the Proceeds of Sale not later than thirty (30) days after the date of the auction unless otherwise agreed by the seller.

If before the Total Amount Due is paid by the buyer the Auctioneer pays the seller an amount equal to the Proceeds of Sale then title to the Lot shall pass to the Auctioneer.

If the buyer fails to pay the Auctioneer the Total Amount Due within fourteen (14) days after the date of the auction, the Auctioneer shall endeavour to notify the seller and take the seller's instructions on the course of action to be taken and, to the extent that it is in the sole opinion of the Auctioneer feasible, shall endeavour to assist the seller to recover the Total Amount Due from the buyer provided that nothing herein shall oblige the Auctioneer to issue proceedings against the buyer in the Auctioneer's own name. If circumstances do not permit the Auctioneer to take instructions from the seller or, if after notifying the seller, it does not receive instructions within seven (7) days, the Auctioneer reserves the right, and is hereby authorised by the seller at the seller's expense, to agree special terms for payments of the Total Amount Due, to remove, store and insure the Lot sold, to settle claims made by or against the buyer on such terms as the Auctioneer shall in its absolute discretion think fit, to take such steps as are necessary to collect monies due by the buyer to the seller and, if necessary, to rescind the sale and refund money to the buyer.

Payment of Proceeds to Overseas Sellers

29. If the seller resides outside Ireland the Proceeds of Sale shall be paid to such seller in Irish Pounds unless it was agreed with the seller prior to the auction that the Proceeds of Sale would be paid in a currency (other than Irish Pounds) specified by the seller in which case the Proceeds of Sale shall be paid by the Auctioneer to the seller in such specified currency (provided that that currency is legally available to the Auctioneer in the amount required) calculated at the rate of exchange quoted to the Auctioneer by its bankers on the date of payment.

Charges for Withdrawn Lots

30. Once catalogued, Lots withdrawn from sale before proofing/publication of Catalogue will be subject to commission of 5% of the Auctioneer's latest estimate of the auction price of the Lot withdrawn together with VAT thereon and any expenses incurred by the Auctioneer in relation to the Lot. If Lots are withdrawn after proofing or publication of Catalogue they will be subject to a commission of 10% of the Auctioneer's latest estimate of the auction price of the Lot withdrawn together with VAT thereon and any expenses incurred by the Auctioneer in relation to the Lot. All commission hereunder must be paid for before Lots withdrawn may be removed.

Unsold Lots

31. Where any Lot fails to sell at auction the Auctioneer shall notify the seller accordingly and (in the absence of agreement between the seller and the Auctioneer to the contrary) such Lot may, in the absolute discretion of the Auctioneer, be re-entered in the next suitable auction unless instructions are received from the seller to the contrary, otherwise such Lots must be collected at the seller's expense within the period of thirty (30) days of such notification from the Auctioneer.

Upon the expiry of such period the Auctioneer shall have the right to sell such Lots by public auction or private sale and on such terms as the Auctioneer in its sole discretion may think fit. The Auctioneer shall be entitled to deduct from the price received for such Lots any sums owing to the Auctioneer in respect of such Lots including without limitation removal, storage and insurance expenses, any commission and expenses due in respect of the prior auction and commission and expenses in respect of the subsequent auction together with all reasonable expenses before remitting the balance to the seller. If the seller cannot be traced the balance shall be placed in a bank account in the name of the Auctioneer for the seller. Any deficit arising shall be due from the seller to the Auctioneer. Any Lots returned at the seller's request shall be returned at the seller's risk and expense and will not be insured in transit unless the Auctioneer is so instructed by the seller.

Auctioneer's Right to Photographs and Illustrations

32. The seller authorises the Auctioneer to photograph and illustrate any Lot placed with it for sale and further authorises the Auctioneer to use such photographs and illustrations and any photographs and illustrations provided by the seller at any time in its absolute discretion (whether or not in connection with the auction).

Catalogue illustrations are included at the discretion of the Auctioneer. Illustration charges will be calculated on the particular category of sale. These charges are subject to change. Irish Art Sale Illustrations: €150.00 full page, €100.00 half page, €50.00 other sizes. Fine Art Illustrations: Scaled fee: €100.00 for lots sold for €3,000.00 and over, hammer price, €50.00 for lots sold under €3,000.00 hammer price. All other sales: €25.00 per illustration. All lots illustrated and not sold are charged €25.00 per illustration.

VAT

34. It is presumed, unless stated to the contrary, that the items listed herein are auction scheme goods as defined in the Finance Act 1995.

35. Artist's Resale Rights (Droit de Suite)

Government Regulations (S.1. 312/2006)

Under this legislation a royalty (droit de suite) is payable to artists or the artist's heirs (if deceased in the last 70 years) of E.U. Nationality on all works resold for €3,000 or more, other than those sold by the artist or the artist's agent.

The resale royalty payable is calculated as follows:

From €3,000 to €50,000 4%
From €50,000.01 to €200,000 3%
From €200,000.01 to €350,000 1%
From €350,000.01 to €500,000 0.5%
Exceeding €500,000 0.25%

The total amount of royalty payable on any individual sale shall not exceed €12,500 The seller is liable for payment (paragraph 7.1 of Government Regulations (S.1. 312/2006) of this royalty on completion of the sale. The artist may request from the Auctioneer any information necessary to secure payment.

The Auctioneer will automatically deduct the amount due from the proceeds of sale and will hold in trust for the artist, their heirs or their representative for a period of 3 years from the date of sale. A vendor may choose to check the ARR Waiver on the Sale Receipt Contract indicating that they accept sole responsibility for the payment and authorises the Auctioneer to disclose their contact details to the artist, their heirs or their representative.



NOTES



ADAM'S Est 1887